

AMERICAN

900 SERIES

MODEL 9320

CRAWLER CRANE

LIFT CRANE RATINGS IN POUNDS

With 92HT Tubular Chord Boom and "T-T" Counterweight (140,000 lbs.)

BOOM LENGTH	RADIUS IN FEET	BOOM ANGLE DEGREE	LIFT RATING IN POUNDS	FEET FROM BOOM POINT TO GROUND
70 FEET	17	81.4	500,000	76
	20	78.9	425,480	75
	25	74.7	324,680	74
	30	70.4	237,130	72
	35	65.9	185,910	70
	40	61.3	152,340	67
	50	51.3	110,890	61
	60	39.5	86,230	50
70	23.2	69,960	33	
80 FEET	18	81.8	475,930	86
	20	80.3	424,920	85
	25	76.6	324,160	84
	30	72.9	237,060	83
	35	69.1	185,760	81
	40	65.2	152,150	79
	50	56.9	110,660	73
	60	47.7	85,970	65
70	36.8	69,720	54	
80	21.6	58,050	35	
90 FEET	20	81.4	424,090	96
	25	78.2	323,320	95
	30	74.9	236,770	93
	35	71.5	185,430	92
	40	68.1	151,810	90
	50	61.0	110,300	85
	60	53.3	85,580	78
	70	44.8	69,350	69
80	34.6	57,700	57	
90	20.3	48,970	37	
100 FEET	21	81.7	398,300	106
	25	79.4	322,610	105
	30	76.4	236,550	104
	35	73.4	185,150	102
	40	70.4	151,500	101
	50	64.2	109,950	96
	60	57.5	85,190	90
	70	50.4	68,970	83
	80	42.3	57,310	73
	90	32.7	48,580	60
100	19.2	41,800	38	
110 FEET	22	81.9	375,480	115
	25	80.3	321,860	114

BOOM LENGTH	RADIUS IN FEET	BOOM ANGLE DEGREE	LIFT RATING IN POUNDS	FEET FROM BOOM POINT TO GROUND
110 FEET CONT.	30	77.7	236,290	114
	35	75.0	184,830	113
	40	72.3	151,150	111
	50	66.7	109,580	107
	60	60.8	84,770	102
	70	54.6	68,560	96
	80	47.9	56,880	87
	90	40.2	48,150	77
	100	31.1	41,370	62
	110	18.3	36,030	40
120 FEET	24	81.6	337,760	125
	25	81.1	321,660	125
	30	78.7	236,060	124
	35	76.3	184,670	123
	40	73.8	151,050	122
	50	68.7	109,540	118
	60	63.5	84,780	114
	70	58.0	68,630	108
	80	52.1	56,970	101
	90	45.7	48,250	92
	100	38.4	41,500	80
	110	29.7	36,230	65
120	17.4	31,770	41	
130 FEET	25	81.8	320,990	135
	30	79.6	235,880	134
	35	77.4	184,420	133
	40	75.1	150,750	132
	50	70.4	109,190	129
	60	65.7	84,390	125
	70	60.7	68,230	119
	80	55.5	56,560	113
	90	49.9	47,840	105
	100	43.8	41,060	96
	110	36.8	35,830	84
	120	28.5	31,390	68
	130	16.7	27,670	43
140 FEET	27	81.6	281,750	145
	30	80.4	235,510	145
	35	78.3	180,010	144
	40	76.2	150,330	142
	50	71.9	108,740	139
	60	67.5	83,900	136
	70	63.0	67,760	131

(Continued)

NOTE: These load charts are intended for instructional purposes only. These load charts were derived from manufacturer sales information which may not be complete or machine specific.

LOAD HOISTING DATA

Maximum Lifting Capacity in Pounds	Minimum Parts of Load Line	Maximum Hoisting Distance		
		RH Drum with Controlled Load Lowering	LH Drum With Controlled Load Lowering	LH Drum Without Controlled Load Lowering
		Ft.	Ft.	Ft.
*500,000	14	59	30	46
490,280	12	69	35	53
449,427	11	76	38	58
408,570	10	83	42	64
367,710	9	93	47	71
326,850	8	104	52	80
286,000	7	119	60	92
245,140	6	139	70	107
204,280	5	167	84	129
163,420	4	209	105	161
122,570	3	279	141	215
81,710	2	419	211	323
40,850	1	839	423	647

*Requires boom point hanger block. Based on 1 1/8 in. amper grade load line with 143,000 lbs. minimum breaking strength.

METRIC

Maximum Lifting Capacity in Kilograms	Minimum Parts of Load Line	Maximum Hoisting Distance		
		RH Drum with Controlled Load Lowering	LH Drum With Controlled Load Lowering	LH Drum Without Controlled Load Lowering
		M	M	M
*226,800	14	18.3	9.2	14.0
222,390	12	21.0	10.7	16.2
203,860	11	23.2	11.6	17.7
185,320	10	25.3	12.8	19.5
166,790	9	28.3	14.3	21.6
148,260	8	31.7	15.8	24.4
129,720	7	36.3	18.3	28.0
111,190	6	42.4	21.3	32.6
92,660	5	50.9	25.6	39.3
74,130	4	63.7	32.0	49.1
55,590	3	85.0	50.0	65.5
37,060	2	127.7	64.3	98.5
18,530	1	255.7	128.9	197.2

*Requires boom point hanger block. Based on 28.8 min. dia. load line with 64865 kgs. minimum breaking strength

BOOM AND JIB ERECTION

92 HT Boom Length In Feet	Maximum No. 30H Jib In Feet
280	0
270	0
260	45
250	85
240	95

METRIC

92 HT Boom Length In Meters	Maximum No. 30H Jib In Meters
85.3	0
82.3	0
79.3	13.7
76.2	25.9
73.2	29.0

Erection is over the idler and at the crawlers with A-Frame hulls raised and tumblers blocked.

NOTE: These load charts are intended for instructional purposes only. These load charts were derived from manufacturer sales information which may not be complete or machine specific.

92HT BOOM COMPOSITION

Boom Length		30 Ft. (9.1 m)	20 Ft. (6.1 m)	10 Ft. (3.0 m)	50 Ft. (15.2 m)	40 Ft. (12.2 m)
In Feet	In Meters	92HT Inner	92HT Center	92ST Center	92ST Center	92H Outer
70	21.3	1	-	-	-	1
80	24.4	1	-	1	-	1
90	27.4	1	1	-	-	1
100	30.5	1	1	1	-	1
110	33.5	1	1	2	-	1
120	36.6	1	-	-	1	1
130	39.6	1	-	1	1	1
140	42.7	1	1	-	1	1
150	45.7	1	1	1	1	1
160	48.8	1	1	2	1	1
170	51.8	1	-	-	2	1
180	54.9	1	-	1	2	1
190	57.9	1	1	-	2	1
200	61.0	1	1	1	2	1
210	64.0	1	1	2	2	1
220	67.1	1	-	-	3	1
230	70.1	1	-	1	3	1
240	73.2	1	1	0	3	1
250	76.2	1	1	1	3	1
260	79.3	1	1	2	3	1
270	82.3	1	0	0	4	1
280	85.3	1	0	1	4	1

PERFORMANCE

Travel Speed 0 to 1.1 MPH maximum (1.77 KmPH)
 Friction Swing 2.28 RPM maximum
 Hydrostatic Swing 1.9 RPM maximum

HOISTING PERFORMANCE:

Function	Single Line Pull at Single Line Speed	
	SLP (Pounds) at SLS (Feet Per Min.)	SLP (Kilograms) at SLS (Meters Per Min.)
Crane	40,000 lbs. at 165 FPM	18144 kg at 50.1 MPM
Third Drum	15,000 lbs. at 225 FPM	6804 kg at 68.6 MPM
Third Drum	21,000 lbs. at 220 FPM	9525 kg at 67.0 MPM
G.D./S.H. Third Drum	40,000 lbs. at 90 FPM	18144 kg at 27.4 MPM

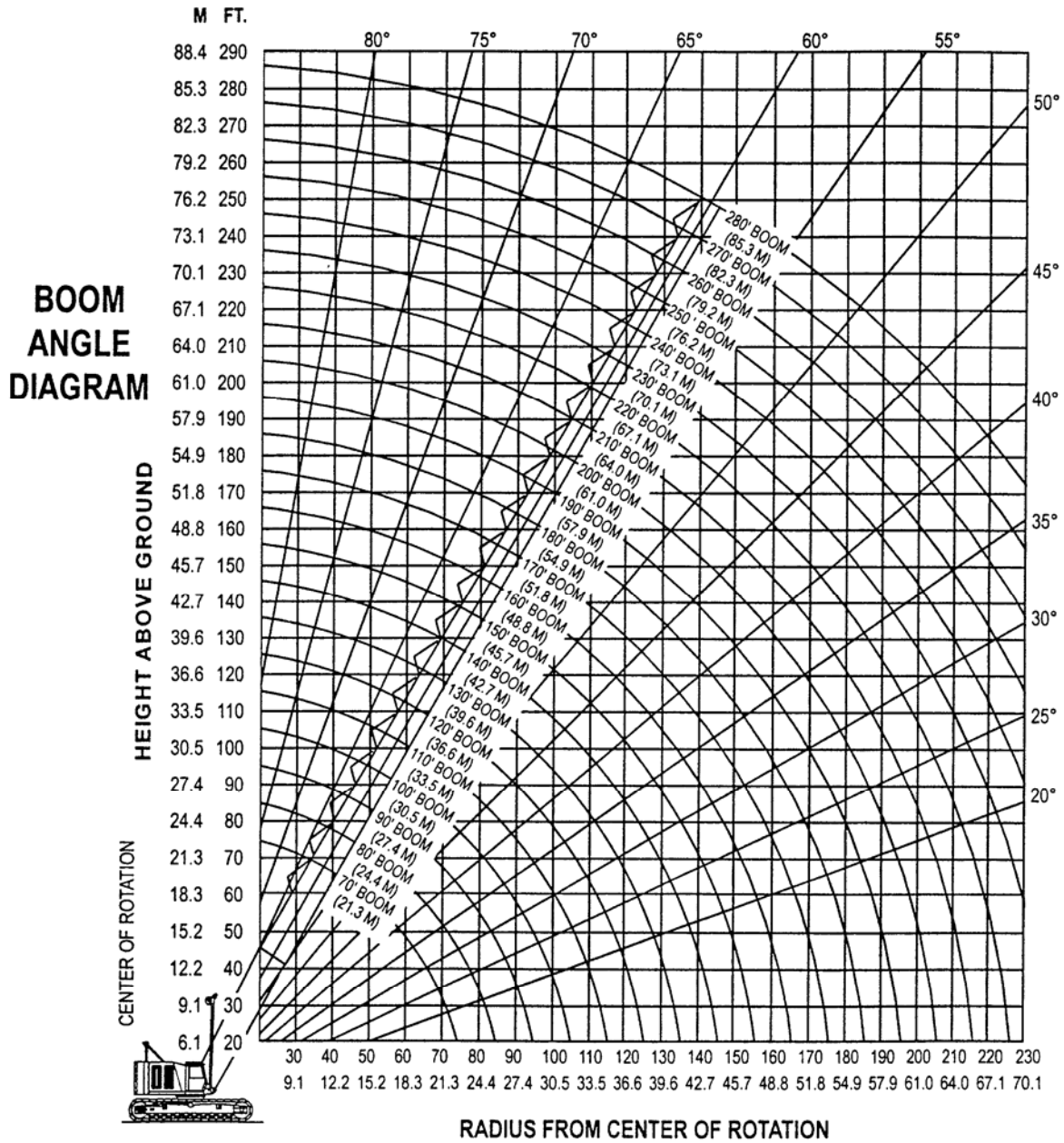
Performance figures are based on machine equipped with standard engine and torque converter.

WEIGHTS

	Lbs.	Kgs.
Lifting Crane with Basic 70 ft.		
92 HT Crane Boom	384,280	174,306
Components Removable for Shipment:		
Counterweight	140,000	63,504
Boom Outer	10,070	4,568
Boom Inner	8,560	3,883
Telescopic Boom Stops	300	136
Outer Bail Assembly	2,450	1,111
A-Frame	5,320	2,413
Side Frames, 50 in. (1270 mm)		
Shoes (2)	91,260	41,395
Torque Tubes (2)	2,670	1,211
Carbody	47,460	21,528
Ground Bearing Pressure:		8,085
Standard Equipped Lift Crane	11.5 PSI	kg/m ²

NOTE: In accordance with varying material situations and the Company's policy of constant product improvement, these specifications are subject to change without notice and without incurring responsibility to units previously sold.

AMERICAN MODEL 9320 CRAWLER CRANE WORKING RANGES



NOTE: These load charts are intended for instructional purposes only. These load charts were derived from manufacturer sales information which may not be complete or machine specific.