



Pipeline Operational Qualification (OQ) Crosswalks

A guide to the 3rd edition pipeline covered task modules.

Complete Packet

Crosswalks provided for:

- API Task Number
- 1st & 2nd Edition NCCER Modules
- NCCER Assessments
- Edition NCCER Performance Verifications (PVs)

Table of Contents

NCCER Pipeline Overview.....	3
Crosswalk Instructions.....	4
NCCER 3rd Edition Covered Task Modules.....	5
Crosswalks:	
● API Task Number.....	8
● 1st and 2nd Edition Modules.....	30
● Assessments.....	37
● Performance Verifications (PVs).....	49

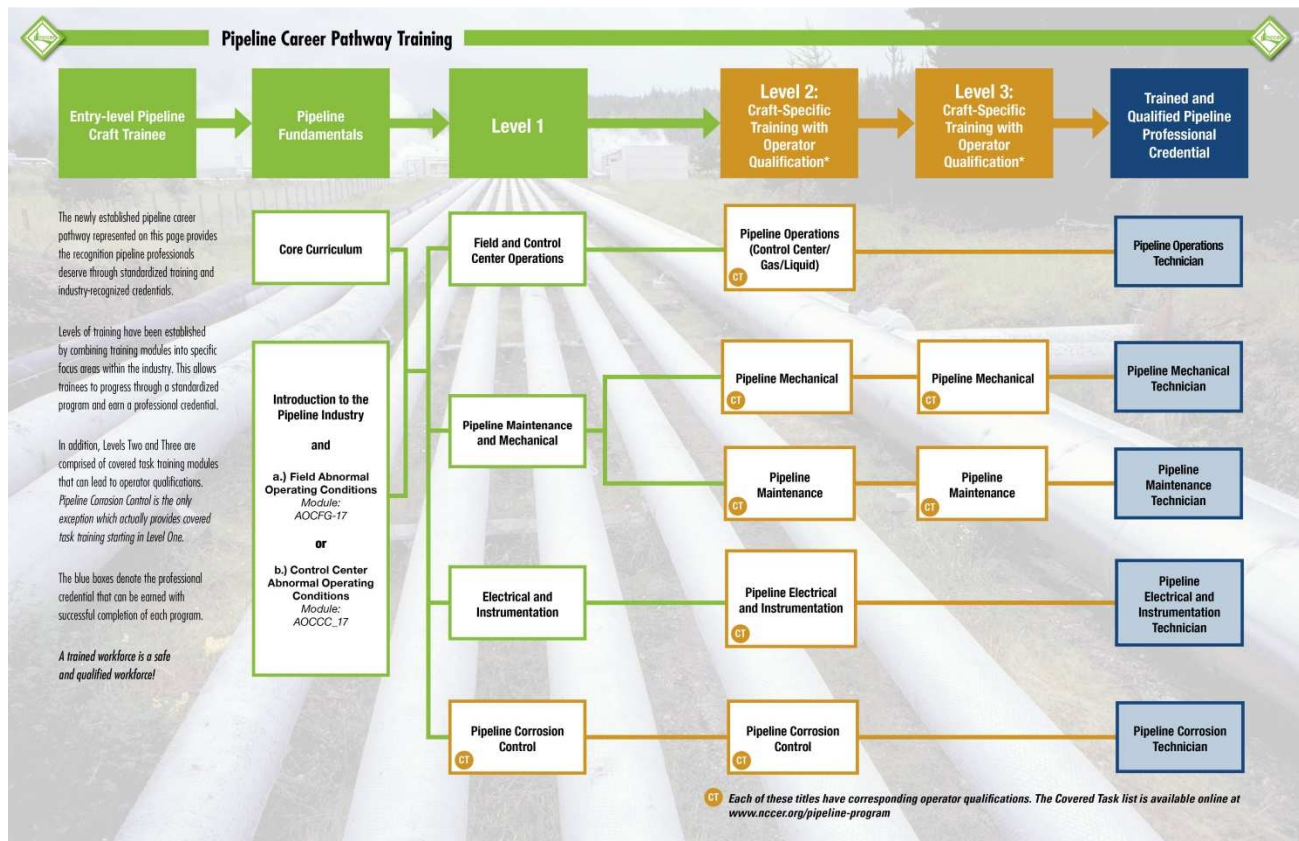
NCCER Pipeline Overview

In response to industry needs, NCCER separated all Pipeline Operations & Maintenance Covered Tasks (CTs) into individual modules to provide more individualized training and testing. Content for the covered task modules was aligned to American Petroleum Institute’s (API) standard 1161 and 1104, 3rd edition. In addition, NCCER continued to develop tasks no longer listed by API for gas operations, and developed tasks identified by the industry (such as cold cutting, flange bolting, and mud plugging). The benefit of providing each covered task as an individual module was the ability to train, test, and qualify only on the task needed. The team streamlined the testing process, provided a more substantial testing platform, and eliminated confusion of training and testing requirements.

The revised pipeline training and qualification program now offers concise direction for five established career paths: Pipeline Operations Technician, Pipeline Mechanical Technician, Pipeline Maintenance Technician, Pipeline Electrical and Instrumentation Technician, and Pipeline Corrosion Technician. Each career path starts with core construction skills and an Introduction to the Pipeline Industry, and then proceeds into each discipline in a training path culminating in training for the CTs.

Overall, there are currently 127 individual covered tasks modules, including two abnormal operating condition (AOC) modules, and are comprised of approximately 3000 pages of craft training in 14 books (including two books translated into Spanish). Exam materials testing competence through knowledge and performance were redesigned for each training module. As of March 30, 2017, all 127 covered task modules are available for purchase through the VitalSource platform, and the computer-based written module exams are available through NCCER’s new test system.

Pipeline Career Pathway Training



How to read the included crosswalks:

The correlation between the first and second editions to the third edition can be difficult to interpret due to the complexity of curriculum and the duplication of covered tasks and assessments. In order to provide a more understandable data set, the following crosswalks have been developed to provide assistance for transition to the third edition of NCCER's pipeline curriculum.

- If a row is highlighted in grey - That task is obsolete and has been reincorporated into the pipeline curriculum under another number. Refer to the third edition NCCER module listed in that row for new qualification on that particular task.
- If a row is highlighted in red - That task is no longer available for operational qualification (OQ) as of September 2, 2017.

API Task Number Crosswalk

1. Find the appropriate API task number in the first column.
2. The second column, titled "1st & 2nd Edition Product", lists the module(s), assessment(s), and PV that were previously associated with that task. *The third column, titled "Product Type" categorizes the information from the second column.*
3. The fourth column, titled "3rd Edition NCCER CT Modules" is the new qualification method for that task. *The fifth column, titled "3rd Edition Product", lists the type of product indicated in the fourth column.*

NCCER Module Number Crosswalk

1. Find the appropriate module number in the first column, titled "1st & 2nd Edition Modules".
2. The second column, titled "API Task Number", indicates the task numbers associated with that module.
3. The third column, titled "3rd Edition NCCER CT Modules", is the new qualification method for that task. *The fourth column, titled "3rd Edition Product", lists the type of product indicated in the third column.*

NCCER Assessment Crosswalk

1. Find the appropriate module number in the first column, titled "Assessment".
2. The second column, titled "API Task Number", indicates the task numbers associated with that assessment.
3. The third column, titled "3rd Edition NCCER CT Modules", is the new qualification method for that task. *The fourth column, titled "3rd Edition Product", lists the type of product indicated in the third column.*

NCCER Performance Verification (PV) Crosswalk

1. Find the appropriate PV number in the first column, titled "Performance Verification".
2. The second column, titled "API Task Number", indicates the task numbers associated with that assessment.
3. The third column, titled "3rd Edition NCCER CT Modules", is the new qualification method for that task. *The fourth column, titled "3rd Edition Product", lists the type of product indicated in the third column.*

NCCER Pipeline Covered Task Modules



3rd Edition NCCER CT Module	Covered Task Title - Qualification Description
AOCFG-17	Abnormal Operating Conditions - Field and Gas
AOCCC-17	Abnormal Operating Conditions - Control Center
CT1_1-17	Measure Structure-to-Soil Potentials
CT1_2-17	Conduct Close Interval Survey
CT1_3-17	Test and Detect Interference
CT1_4-17	Inspect and Perform Electrical Test of Bonds
CT1_5-17	Inspect and Test Electrical Isolation
CT2_1-17	Verify Test Lead Continuity
CT2_2-17	Repair Damaged Test Leads
CT2_3-17	Install Test Leads by Non-Exothermic Welding Methods
CT2_4-17	Install Test Leads by Exothermic Welding Methods
CT3_0-17	Obtain a Voltage and Current Output Reading from a Rectifier to Verify Proper Performance
CT4_1-17	Troubleshoot Rectifier
CT4_2-17	Repair or Replace Defective Rectifier Components
CT4_3-17	Adjustment of Rectifier
CT5_1-17	Examine for Mechanical Damage on Buried or Submerged Pipe
CT5_2-17	Examine for External Corrosion on Buried or Submerged Pipe
CT5_3-17	Inspect the Condition of External Coating on Buried or Submerged Pipe
CT7_1-17	Visual Inspection of Atmospheric Coatings
CT7_2-17	Prepare Surface for Coating Using Hand and Power Tools
CT7_3-17	Prepare Surface for Coating by Abrasive Water Blasting
CT7_4-17	Prepare Surface for Coating by Abrasive Blasting Media Other Than Water
CT7_5-17	Apply Coating Using Hand Application Methods
CT7_6-17	Apply Coating Using Spray Application
CT7_7-17	Perform Coating Inspection
CT8_1-17	Measure Pit Depth with Pit Gauge
CT8_2-17	Measure Wall Thickness with Ultrasonic Meter
CT8_3-17	Measure Corroded Area
CT9_1-17	Install Bonds
CT9_2-17	Install Galvanic Anodes
CT9_3-17	Install Rectifiers
CT9_4-17	Install Impressed Current Groundbeds
CT9_5-17	Repair Shorted Casings
CT9_6-17	Install Electrical Insulating Device
CT10_1-17	Insert and Remove Coupons
CT10_2-17	Monitor Probes (Online)
CT11_0-17	Monitoring and Controlling the Injection Rate of the Corrosion Inhibitor
CT12_0-17	Visually Inspect Internal Pipe Surface
CT14_1-17	Locate Line
CT14_2-17	Install, Inspect, and Maintain Permanent Marker
CT14_5-17	Install, Inspect, and Maintain Temporary Marker
CT15_1-17	Visually Inspect Surface Conditions of Right-of-Way
CT16_1-17	Inspect Navigable Waterway Crossing
CT19_1-17	Valve Body Winterization or Corrosion Inhibition
CT19_2-17	Valve Lubrication

NCCER Pipeline Covered Task Modules



3rd Edition NCCER CT Module	Covered Task Title - Qualification Description
CT19_3-17	Valve Seat Sealing
CT19_4-17	Valve Stem Packing Maintenance
CT19_5-17	Adjust Actuator/Operator, Electric
CT19_6-17	Adjust Actuator/Operator, Pneumatic
CT19_7-17	Adjust Actuator/Operator, Hydraulic
CT20_0-17	Inspect Main-Line Valves
CT21_1-17	Repair Valve Actuator/Operator, Pneumatic
CT21_2-17	Disassemble and Reassemble Valves
CT21_3-17	Internal Inspection of Valves and Their Components
CT21_4-17	Repair Valve Actuator/Operator, Hydraulic
CT21_5-17	Repair Valve Actuator/Operator, Electric
CT22_1-17	Inspect Tank Pressure / Vacuum Breakers
CT22_2-17	Inspect, Test, and Calibrate HVL Tank Pressure Relief Valves
CT23_1-17	Maintain and Repair Relief Valves
CT23_2-17	Inspect, Test, and Calibrate Relief Valves
CT24_1-17	Maintain and Repair Pressure Limiting Devices
CT24_2-17	Inspect, Test, and Calibrate Pressure Limiting Devices
CT25_1-17	Inspect, Test, and Calibrate Pressure Switches
CT25_2-17	Inspect, Test, and Calibrate Pressure Transmitters
CT26_0-17	Verify or Set Protection Parameters for Programmable Controllers and/or Other Instrumentation Control Loops
CT27_1-17	Routine Inspection of Breakout Tanks (API 653 Monthly or DOT Annual)
CT28_0-17	Provide Security for Pipeline Facilities
CT29_1-17	Launching In-Line Inspection Devices
CT29_2-17	Receiving In-Line Inspection Devices
CT30_0-17	Test Overfill Protective Devices
CT31_0-17	Inspect and Calibrate Overfill Protective Devices (Liquid)
CT32_0-17	Observation of Excavation Activities
CT33_1-17	Determine Allowable Line Pressure in Section of Pipe to be Moved
CT33_2-17	Preparation for Movement Activities
CT33_3-17	Moving In-Service Pipeline
CT34_0-17	Inspect Existing Pipe Following Movement
CT36_1-17	Safe Disconnect of Pipeline Facilities
CT36_2-17	Purging of Pipeline Facilities
CT36_3-17	Sealing a Disconnected Portion of Pipeline
CT37_0-17	Install or Repair Support Structures on Existing Aboveground Components
CT38_1-17	Visually Inspect Pipe and Pipe Components Prior to Installation
CT38_3-17	Visually Inspect that Welds Meet DOT Requirements
CT39_0-17	Backfilling a Trench Following Maintenance
CT40_1-17	Fit Full Encirclement Welded Split Sleeve
CT40_3-17	Apply Composite Sleeve
CT40_4-17	Install Mechanical Bolt-On Split Repair Sleeve
CT40_5-17	Install Weldable Compression Coupling
CT40_6-17	Install and Remove Plugging Machine
CT40_7-17	Installing a Tap 2 Inches and Under on a Pipeline System

NCCER Pipeline Covered Task Modules



3rd Edition NCCER CT Module	Covered Task Title - Qualification Description
CT40_8-17	Installing a Tap Larger Than 2 Inches on a Pipeline System
CT40_9-17	Install and Remove Completion Plug on Pipelines Larger than 2 Inches
CT41_0-17	Conduct Pressure Test
CT42_7-17	Welding
CT44_3-17	Inspect, Test, and Maintain Flow Computer for Hazardous Liquid Leak Detection
CT44_4-17	Inspection, Testing, and Corrective and Preventative Maintenance of Tank Gauging for Hazardous Liquid Leak Detection
CT44_5-17	Prove Flow Meters for Hazardous Liquid Leak Detection
CT44_6-17	Maintain Flow Meters for Hazardous Liquid Leak Detection
CT44_7-17	Inspect, Test, and Maintain Gravimeters/Densitometers for Hazardous Liquid Leak Detection
CT44_8-17	Inspect, Test, and Maintain Temperature Transmitters for Hazardous Liquid Leak Detection
CT50_0-17	Purge Gas from a Pipeline
CT51_0-17	Purge Air from a Gas Pipeline
CT52_1-17	Conduct Vegetation Survey
CT52_2-17	Conduct a Leak Survey with a CGD
CT52_3-17	Conduct a Leak Survey with a Flame Ionization Unit
CT54_0-17	Test Remotely Controlled Shutdown Devices
CT55_0-17	Maintain Fixed Gas Detection Equipment
CT56_0-17	Perform Incremental Pressure Increases to Uprate the MAOP
CT57_0-17	Operate Odorant Equipment
CT58_0-17	Monitor Odorant Level
CT59_0-17	Vault Maintenance
CT63_1-17	Start-Up of a Liquid Pipeline (Field)
CT63_2-17	Shutdown of a Liquid Pipeline (Field)
CT63_3-17	Monitor Pressures, Flows, Communications, and Line Integrity and Maintain Them Within Allowable Limits on a Liquid Pipeline System (Field)
CT63_4-17	Locally Operate Valves on a Liquid Pipeline System (Field)
CT64_1-17	Start-Up of a Liquid Pipeline (Control Center)
CT64_2-17	Shutdown of a Liquid Pipeline (Control Center)
CT64_3-17	Monitor Pressures, Flows, Communications, and Line Integrity and Maintain Them Within Allowable Limits on a Liquid Pipeline System (Control Center)
CT64_4-17	Remotely Operate Valves on a Liquid Pipeline System
CT65_1-17	Start-Up of a Gas Pipeline
CT65_2-17	Shutdown of a Gas Pipeline
CT65_3-17	Monitor Pressures, Flows, Communications and Line Integrity and Maintain Them Within Allowable Limits (Gas)
CT65_4-17	Manually or Remotely Open or Close Valves or Other Equipment
CTCC-17	Cold Cutting
CTFB-17	Flange Bolting
CTMP-17	Mud Plugging
CTTB-17	Tubing
CTTP-17	Threaded Pipe Fabrication

NCCER Pipeline Operational Qualification (OQ) Crosswalk

API Task Number



For this task...

If you used this product...

Use this product now.

API Task Number	1st & 2nd Edition Product	Product Type	3rd Edition NCCER CT Modules	3rd Edition Product
1.1	61108-02	Module	CT1_1-17	Module
	CPFT1M	Assessment		
	PV011	PV		
1.2	61205-02	Module	CT1_2-17	Module
	CPFT2	Assessment		
	PV012	PV		
1.3	61203-02	Module	CT1_3-17	Module
	CPFT2	Assessment		
	PV013	PV		
1.4	61205-02	Module	CT1_4-17	Module
	CPFT1M	Assessment		
	PV014	PV		
1.5	61108-02	Module	CT1_5-17	Module
	CPFT1M	Assessment		
	PV015	PV		
2.1	61109-02	Module	CT2_1-17	Module
	CPFT1I	Assessment		
	PV021	PV		
2.2	61109-02	Module	CT2_2-17	Module
	CPFT1I	Assessment		
	PV022	PV		
2.3	61109-02	Module	CT2_3-17	Module
	CPFT1I	Assessment		
	PV023	PV		
2.4	61109-02	Module	CT2_4-17	Module
	CPFT1I	Assessment		
	PV024	PV		
3.0	61108-02	Module	CT3_0-17	Module
	CPFT1M	Assessment		
	CPFT2	Assessment		
	PV030	PV		
3.1 *obsolete task	61108-02	Module	CT3_0-17	Module
	CPFT1M	Assessment		
	PV031	PV		
3.2 *obsolete task	61108-02	Module	CT3_0-17	Module
	CPFT1M	Assessment		
	CPFT2	Assessment		
	PV032	PV		

NCCER Pipeline Operational Qualification (OQ) Crosswalk

API Task Number



For this task...

If you used this product...

Use this product now.

API Task Number	1st & 2nd Edition Product	Product Type	3rd Edition NCCER CT Modules	3rd Edition Product
4.1	61202-02	Module	CT4_1-17	Module
	CPFT2	Assessment		
	PV041	PV		
4.2	61202-02	Module	CT4_2-17	Module
	CPFT2	Assessment		
	PV042	PV		
4.3	61202-02	Module	CT4_3-17	Module
	CPFT3	Assessment		
	PV043	PV		
5.1	61105-02	Module	CT5_1-17	Module
	62204-02	Module		
	CPFT1I	Assessment		
	PMTCUSTOM	Assessment		
	PMTINSP	Assessment		
	PV051	PV		
5.2	61105-02	Module	CT5_2-17	Module
	CPFT1I	Assessment		
	CPFT2	Assessment		
	PMTCUSTOM	Assessment		
	PMTINSP	Assessment		
	PV052	PV		
5.3	61105-02	Module	CT5_3-17	Module
	CPFT1I	Assessment		
	CPFT2	Assessment		
	PMTCUSTOM	Assessment		
	PMTINSP	Assessment		
	PV053	PV		
7.1	61106-02	Module	CT7_1-17	Module
	CPFT2	Assessment		
	PMTCUSTOM	Assessment		
	PMTLEVEL1	Assessment		
	PV071	PV		
7.2	61106-02	Module	CT7_2-17	Module
	CPFT1I	Assessment		
	PMT	Assessment		
	PMTCUSTOM	Assessment		
	PMTLEVEL1	Assessment		
	PV072	PV		

NCCER Pipeline Operational Qualification (OQ) Crosswalk

API Task Number



For this task...

If you used this product...

Use this product now.

API Task Number	1st & 2nd Edition Product	Product Type	3rd Edition NCCER CT Modules	3rd Edition Product
7.3	61106-02	Module	CT7_3-17	Module
	CPFT1I	Assessment		
	PMT	Assessment		
	PMTCUSTOM	Assessment		
	PMTLEVEL1	Assessment		
	PV073	PV		
7.4	61207-02	Module	CT7_4-17	Module
	CPFT1I	Assessment		
	PMT	Assessment		
	PMTCUSTOM	Assessment		
	PMTLEVEL1	Assessment		
	PV074	PV		
7.5	61106-02	Module	CT7_5-17	Module
	CPFT1I	Assessment		
	PMTCUSTOM	Assessment		
	PMTLEVEL1	Assessment		
	PV075	PV		
7.6	61208-02	Module	CT7_6-17	Module
	CPFT1I	Assessment		
	PMTCUSTOM	Assessment		
	PMTLEVEL1	Assessment		
	PV076	PV		
7.7	61206-02	Module	CT7_7-17	Module
	CPFT1I	Assessment		
	PMTCUSTOM	Assessment		
	PMTLEVEL1	Assessment		
	PV077	PV		
8.1	61104-02	Module	CT8_1-17	Module
	CPFT1M	Assessment		
	PMTCUSTOM	Assessment		
	PMTINSP	Assessment		
	PMTLEVEL2	Assessment		
	PV081	PV		
8.2	61104-02	Module	CT8_2-17	Module
	CPFT1M	Assessment		
	PMTCUSTOM	Assessment		
	PMTINSP	Assessment		
	PMTLEVEL2	Assessment		
	PV082	PV		

NCCER Pipeline Operational Qualification (OQ) Crosswalk

API Task Number



For this task...

If you used this product...

Use this product now.

API Task Number	1st & 2nd Edition Product	Product Type	3rd Edition NCCER CT Modules	3rd Edition Product
8.3	61104-02	Module	CT8_3-17	Module
	CPFT1M	Assessment		
	PMTCUSTOM	Assessment		
	PMTINSP	Assessment		
	PMTLEVEL2	Assessment		
	PV083	PV		
9.1	61203-02	Module	CT9_1-17	Module
	CPFT3	Assessment		
	PV091	PV		
9.2	61201-02	Module	CT9_2-17	Module
	CPFT2	Assessment		
	PV092	PV		
9.3	61201-02	Module	CT9_3-17	Module
	CPFT3	Assessment		
	PV093	PV		
9.4	61201-02	Module	CT9_4-17	Module
	CPFT3	Assessment		
	PV094	PV		
9.5	61204-02	Module	CT9_5-17	Module
	61304-02	Module		
	CPFT1I	Assessment		
	PMT	Assessment		
	PMTCUSTOM	Assessment		
	PMTLEVEL1	Assessment		
	PMTLEVEL2	Assessment		
	PV095	PV		
9.6	61108-02	Module	CT9_6-17	Module
	CPFT1M	Assessment		
	PV096	PV		
10.1	61111-02	Module	CT10_1-17	Module
	CPFT1I	Assessment		
	PV101	PV		
10.2	61111-02	Module	CT10_2-17	Module
	CPFT1M	Assessment		
	PV102	PV		
11.0	61111-02	Module	CT11_0-17	Module
	CPFT1M	Assessment		
	PV110	PV		

NCCER Pipeline Operational Qualification (OQ) Crosswalk API Task Number



For this task...

If you used this product...

Use this product now.

API Task Number	1st & 2nd Edition Product	Product Type	3rd Edition NCCER CT Modules	3rd Edition Product
12.0	61110-02	Module	CT12_0-17	Module
	CPFT1I	Assessment		
	PV120	PV		
13.1 <i>*obsolete task</i>	61106-02	Module	CT7_2-17	Module
	CPFT1I	Assessment		
	PMT	Assessment		
	PMTCUSTOM	Assessment		
	PMTLEVEL1	Assessment		
	PV131	PV		
13.2 <i>*obsolete task</i>	61106-02	Module	CT7_3-17	Module
	CPFT1I	Assessment		
	PMT	Assessment		
	PMTCUSTOM	Assessment		
	PMTLEVEL1	Assessment		
	PV132	PV		
13.3 <i>*obsolete task</i>	61207-02	Module	CT7_4-17	Module
	CPFT1I	Assessment		
	PMT	Assessment		
	PMTCUSTOM	Assessment		
	PMTLEVEL1	Assessment		
	PV133	PV		
13.4 <i>*obsolete task</i>	61107-02	Module	CT7_5-17	Module
	CPFT1I	Assessment		
	PMT	Assessment		
	PMTCUSTOM	Assessment		
	PMTLEVEL1	Assessment		
	PV134	PV		
13.5 <i>*obsolete task</i>	61208-02	Module	CT7_6-17	Module
	CPFT1I	Assessment		
	PMT	Assessment		
	PMTCUSTOM	Assessment		
	PMTLEVEL1	Assessment		
	PV135	PV		

NCCER Pipeline Operational Qualification (OQ) Crosswalk

API Task Number



For this task...

If you used this product...

Use this product now.

API Task Number	1st & 2nd Edition Product	Product Type	3rd Edition NCCER CT Modules	3rd Edition Product
14.1	61103-02	Module	CT14_1-17	Module
	62106-02	Module		
	62106-14	Module		
	62107-02	Module		
	AEN62PMT CST03	Assessment		
	PMT	Assessment		
	PMTCUSTOM	Assessment		
	PMTLEVEL1	Assessment		
	PMTLEVEL2	Assessment		
	PV141	PV		
14.2	62106-02	Module	CT14_2-17	Module
	62106-14	Module		
	AEN62PMT CST03	Assessment		
	PMT	Assessment		
	PMTCUSTOM	Assessment		
	PMTLEVEL1	Assessment		
	PV142	PV		
14.3 <i>*obsolete task</i>	62106-02	Module	CT14_2-17	Module
	PMT	Assessment		
	PMTCUSTOM	Assessment		
	PMTLEVEL1	Assessment		
	PV143	PV		
14.4 <i>*obsolete task</i>	62106-02	Module	CT14_2-17	Module
	PMT	Assessment		
	PMTCUSTOM	Assessment		
	PMTLEVEL1	Assessment		
	PV144	PV		
14.5	62106-02	Module	CT14_5-17	Module
	62106-14	Module		
	62107-02	Module		
	AEN62PMT CST03	Assessment		
	PMT	Assessment		
	PMTCUSTOM	Assessment		
	PMTLEVEL1	Assessment		
	PMTLEVEL2	Assessment		
PV145	PV			

NCCER Pipeline Operational Qualification (OQ) Crosswalk

API Task Number



For this task...

If you used this product...

Use this product now.

API Task Number	1st & 2nd Edition Product	Product Type	3rd Edition NCCER CT Modules	3rd Edition Product
15.1	62109-14	Module	CT15_1-17	Module
	62201-02	Module		
	62206-02	Module		
	AEN62PMTCT03	Assessment		
	PMT	Assessment		
	PMTCUSTOM	Assessment		
	PMTLEVEL1	Assessment		
	PMTLEVEL2	Assessment		
	PV151	PV		
15.2 <i>*obsolete task</i>	62201-02	Module	CT15_1-17	Module
	PMT	Assessment		
	PMTCUSTOM	Assessment		
	PMTLEVEL1	Assessment		
	PMTLEVEL2	Assessment		
	PV152	PV		
16.1	62201-02	Module	CT16_1-17	Module
	PMT	Assessment		
	PMTCUSTOM	Assessment		
	PMTINSP	Assessment		
	PV161	PV		
16.2 <i>*obsolete task</i>	62201-02	Module	CT16_1-17	Module
	PMT	Assessment		
	PMTCUSTOM	Assessment		
	PMTINSP	Assessment		
	PV162	PV		
16.3 <i>*obsolete task</i>	62201-02	Module	CT16_1-17	Module
	PMT	Assessment		
	PMTCUSTOM	Assessment		
	PMTINSP	Assessment		
	PV163	PV		
17.1 <i>*obsolete task</i>	61103-02	Module	CT14_1-17	Module
	62107-02	Module		
	PMT	Assessment		
	PMTCUSTOM	Assessment		
	PMTLEVEL1	Assessment		
	PMTLEVEL2	Assessment		
	PV171	PV		

NCCER Pipeline Operational Qualification (OQ) Crosswalk

API Task Number



For this task...

If you used this product...

Use this product now.

API Task Number	1st & 2nd Edition Product	Product Type	3rd Edition NCCER CT Modules	3rd Edition Product
17.2 <i>*obsolete task</i>	62107-02	Module	CT14_5-17	Module
	PMT	Assessment		
	PMTCUSTOM	Assessment		
	PMTLEVEL1	Assessment		
	PMTLEVEL2	Assessment		
	PV172	PV		
17.3 <i>*obsolete task</i>	62107-02	Module	CT14_5-17	Module
	PMT	Assessment		
	PMTCUSTOM	Assessment		
	PMTLEVEL1	Assessment		
	PMTLEVEL2	Assessment		
	PV173	PV		
18.1 <i>*obsolete task</i>	62206-02	Module	CT15_1-17	Module
	PMT	Assessment		
	PMTCUSTOM	Assessment		
	PMTINSP	Assessment		
	PV181	PV		
18.2 <i>*obsolete task</i>	62206-02	Module	CT63_3-17 CT64_3-17	Module
	62206-02	Module		
	PMT	Assessment		
	PMTCUSTOM	Assessment		
	PMTINSP	Assessment		
	PV182	PV		
19.1	63107-02	Module	CT19_1-17	Module
	MPT	Assessment		
	PV191	PV		
19.2	63107-02	Module	CT19_2-17	Module
	MPT	Assessment		
	PV192	PV		
19.3	63107-02	Module	CT19_3-17	Module
	MPT	Assessment		
	PV193	PV		
19.4	63107-02	Module	CT19_4-17	Module
	MPT	Assessment		
	PV194	PV		
19.5	63308-02	Module	CT19_5-17	Module
	64208-02	Module		
	EIPT	Assessment		
	MPT	Assessment		
	PV195	PV		

NCCER

NCCER Pipeline Operational Qualification (OQ) Crosswalk

API Task Number



For this task...

If you used this product...

Use this product now.

API Task Number	1st & 2nd Edition Product	Product Type	3rd Edition NCCER CT Modules	3rd Edition Product
19.6	63306-02	Module	CT19_6-17	Module
	MPT	Assessment		
	PV196	PV		
19.7	63307-02	Module	CT19_7-17	Module
	MPT	Assessment		
	PV197	PV		
20.0	62203-02	Module	CT20_0-17	Module
	62203-14	Module		
	AEN62PMTCS03	Assessment		
	MPT	Assessment		
	PMT	Assessment		
	PMTCUSTOM	Assessment		
	PMTINSP	Assessment		
PV200	PV			
20.1 <i>*obsolete task</i>	62203-02	Module	CT20_0-17	Module
	63204-02	Module		
	MPT	Assessment		
	PMT	Assessment		
	PMTCUSTOM	Assessment		
	PMTINSP	Assessment		
	PV201	PV		
20.2 <i>*obsolete task</i>	62203-02	Module	CT20_0-17	Module
	63204-02	Module		
	MPT	Assessment		
	PMT	Assessment		
	PMTCUSTOM	Assessment		
	PMTINSP	Assessment		
	PV202	PV		
20.3 <i>*obsolete task</i>	62203-02	Module	CT20_0-17	Module
	63204-02	Module		
	MPT	Assessment		
	PMT	Assessment		
	PMTCUSTOM	Assessment		
	PMTINSP	Assessment		
	PV203	PV		

NCCER Pipeline Operational Qualification (OQ) Crosswalk

API Task Number



For this task...

If you used this product...

Use this product now.

API Task Number	1st & 2nd Edition Product	Product Type	3rd Edition NCCER CT Modules	3rd Edition Product
20.4 *obsolete task	62203-02	Module	CT20_0-17	Module
	63204-02	Module		
	MPT	Assessment		
	PMT	Assessment		
	PMTCUSTOM	Assessment		
	PMTINSP	Assessment		
	PV204	PV		
21.1	63306-02	Module	CT21_1-17	Module
	MPT	Assessment		
	PV211	PV		
21.2	63204-02	Module	CT21_2-17	Module
	MPT	Assessment		
	PV212	PV		
21.3	63204-02	Module	CT21_3-17	Module
	MPT	Assessment		
	PV213	PV		
21.4	63307-02	Module	CT21_4-17	Module
	MPT	Assessment		
	PV214	PV		
21.5	63308-02	Module	CT21_5-17	Module
	MPT	Assessment		
	PV215	PV		
22.0 *obsolete task	63205-02	Module	CT22_1-17	Module
	63205-02	Module		
	MPT	Assessment	CT22_2-17	
	PV220	PV		
22.1	63205-02	Module	CT22_1-17	Module
	MPT	Assessment		
	PV221	PV		
22.2	63205-02	Module	CT22_2-17	Module
	MPT	Assessment		
	PV222	PV		
23.1	63205-02	Module	CT23_1-17	Module
	MPT	Assessment		
	PV231	PV		
23.2	63205-02	Module	CT23_2-17	Module
	MPT	Assessment		
	PV232	PV		

NCCER Pipeline Operational Qualification (OQ) Crosswalk

API Task Number



For this task...

If you used this product...

Use this product now.

API Task Number	1st & 2nd Edition Product	Product Type	3rd Edition NCCER CT Modules	3rd Edition Product
24.1	63205-02	Module	CT24_1-17	Module
	MPT	Assessment		
	PV241	PV		
24.2	63205-02	Module	CT24_2-17	Module
	MPT	Assessment		
	PV242	PV		
25.1	64206-02	Module	CT25_1-17	Module
	EIPT	Assessment		
	PV251	PV		
25.2	64206-02	Module	CT25_2-17	Module
	EIPT	Assessment		
	PV252	PV		
26.0	64207-02	Module	CT26_0-17	Module
	EIPT	Assessment		
	PV260	PV		
27.1	62202-02	Module	CT27_1-17	Module
	62202-14	Module		
	AEN62PMTCS03	Assessment		
	PMT	Assessment		
	PMTCUSTOM	Assessment		
	PMTINSP	Assessment		
	PV271	PV		
27.2	62202-02	Module	N/A	Retired - No longer available for qualification as of September 2, 2017
	PMT	Assessment		
	PMTCUSTOM	Assessment		
	PMTINSP	Assessment		
	PV272	PV		
27.3	62202-02	Module	N/A	Retired - No longer available for qualification as of September 2, 2017
	PMT	Assessment		
	PMTCUSTOM	Assessment		
	PMTINSP	Assessment		
	PV273	PV		
28.0	62209-14	Module	CT28_0-17	Module
	AEN62PMTCS03	Assessment		
	PMT	Assessment		
	PMTCUSTOM	Assessment		
	PMTLEVEL1	Assessment		
	PV280	PV		

NCCER Pipeline Operational Qualification (OQ) Crosswalk

API Task Number



For this task...

If you used this product...

Use this product now.

API Task Number	1st & 2nd Edition Product	Product Type	3rd Edition NCCER CT Modules	3rd Edition Product
29.1	62303-02	Module	CT29_1-17	Module
	PMT	Assessment		
	PMTCUSTOM	Assessment		
	PMTLEVEL1	Assessment		
	PMTLEVEL2	Assessment		
	PV291	PV		
29.2	62303-02	Module	CT29_2-17	Module
	PMT	Assessment		
	PMTCUSTOM	Assessment		
	PMTLEVEL1	Assessment		
	PMTLEVEL2	Assessment		
	PV292	PV		
30.0	64206-02	Module	CT30_0-17	Module
	EIPT	Assessment		
	PV300	PV		
31.0	64206-02	Module	CT31_0-17	Module
	EIPT	Assessment		
	PV310	PV		
32.0	62107-02	Module	CT32_0-17	Module
	62212-14	Module		
	62302-02	Module		
	AEN62PMT CST03	Assessment		
	PMT	Assessment		
	PMTCUSTOM	Assessment		
	PMTCUSTOM	Assessment		
	PMTINSP	Assessment		
	PMTLEVEL1	Assessment		
	PMTLEVEL2	Assessment		
	PMTLEVEL2	Assessment		
	PV320	PV		
33.1	62305-02	Module	CT33_1-17	Module
	PMT	Assessment		
	PMTCUSTOM	Assessment		
	PMTLEVEL2	Assessment		
	PV331	PV		
33.2	62305-02	Module	CT33_2-17	Module
	PMT	Assessment		
	PMTCUSTOM	Assessment		
	PMTLEVEL2	Assessment		
	PV332	PV		

NCCER Pipeline Operational Qualification (OQ) Crosswalk API Task Number



For this task...

If you used this product...

Use this product now.

API Task Number	1st & 2nd Edition Product	Product Type	3rd Edition NCCER CT Modules	3rd Edition Product
33.3	62305-02	Module	CT33_3-17	Module
	PMT	Assessment		
	PMTCUSTOM	Assessment		
	PMTLEVEL2	Assessment		
	PV333	PV		
34.0	62302-02	Module	CT34_0-17	Module
	62305-02	Module		
	PMT	Assessment		
	PMTCUSTOM	Assessment		
	PMTINSP	Assessment		
	PV340	PV		
35.0 <i>*obsolete task</i>	62302-02	Module	CT32_0-17	Module
	PMT	Assessment		
	PMTCUSTOM	Assessment		
	PMTLEVEL2	Assessment		
	PV350	PV		
36.1	62309-02	Module	CT36_1-17	Module
	PMT	Assessment		
	PMTCUSTOM	Assessment		
	PMTLEVEL2	Assessment		
	PV361	PV		
36.2	62309-02	Module	CT36_2-17	Module
	PMT	Assessment		
	PMTCUSTOM	Assessment		
	PMTLEVEL2	Assessment		
	PV362	PV		
36.3	62309-02	Module	CT36_3-17	Module
	PMT	Assessment		
	PMTCUSTOM	Assessment		
	PMTLEVEL2	Assessment		
	PV363	PV		
37.0	62304-02	Module	CT37_0-17	Module
	PMT	Assessment		
	PMTCUSTOM	Assessment		
	PMTLEVEL2	Assessment		
	PV370	PV		
38.1	62205-02	Module	CT38_1-17	Module
	PMT	Assessment		
	PMTCUSTOM	Assessment		
	PMTINSP	Assessment		
	PV381	PV		

NCCER

NCCER Pipeline Operational Qualification (OQ) Crosswalk

API Task Number



For this task...

If you used this product...

Use this product now.

API Task Number	1st & 2nd Edition Product	Product Type	3rd Edition NCCER CT Modules	3rd Edition Product
38.2	62205-02	Module	N/A	Retired - No longer available for qualification as of September 2, 2017
	PMT	Assessment		
	PMTCUSTOM	Assessment		
	PMTINSP	Assessment		
	PV382	PV		
38.3	62205-02	Module	CT38_3-17	Module
	PMT	Assessment		
	PMTCUSTOM	Assessment		
	PMTINSP	Assessment		
	PV383	PV		
38.4	62401-02	Module	N/A	Retired - No longer available for qualification as of September 2, 2017
	N/A	Assessment		
	PV384	PV		
38.5	62401-02	Module	N/A	Retired - No longer available for qualification as of September 2, 2017
	N/A	Assessment		
	PV385	PV		
38.6	62401-02	Module	N/A	Retired - No longer available for qualification as of September 2, 2017
	N/A	Assessment		
	PV386	PV		
38.7	62401-02	Module	N/A	Retired - No longer available for qualification as of September 2, 2017
	N/A	Assessment		
	PV387	PV		
39.0	62107-02	Module	CT39_0-17	Module
	62212-14	Module		
	AEN62PMTCSO3	Assessment		
	PMT	Assessment		
	PMTCUSTOM	Assessment		
	PMTINSP	Assessment		
	PMTLEVEL1	Assessment		
	PMTLEVEL2	Assessment		
PV390	PV			

NCCER Pipeline Operational Qualification (OQ) Crosswalk

API Task Number



For this task...

If you used this product...

Use this product now.

API Task Number	1st & 2nd Edition Product	Product Type	3rd Edition NCCER CT Modules	3rd Edition Product
40.1	62304-02	Module	CT40_1-17	Module
	PMT	Assessment		
	PMTCUSTOM	Assessment		
	PMTLEVEL2	Assessment		
	PV401	PV		
40.2 <i>*obsolete task</i>	62304-02	Module	CT40_1-17	Module
	PMT	Assessment		
	PMTCUSTOM	Assessment		
	PMTLEVEL2	Assessment		
	PV402	PV		
40.3	62304-02	Module	CT40_3-17	Module
	PMT	Assessment		
	PMTCUSTOM	Assessment		
	PMTLEVEL2	Assessment		
	PV403	PV		
40.4	62304-02	Module	CT40_4-17	Module
	PMT	Assessment		
	PMTCUSTOM	Assessment		
	PMTLEVEL2	Assessment		
	PV404	PV		
40.5	62304-02	Module	CT40_5-17	Module
	PMT	Assessment		
	PMTCUSTOM	Assessment		
	PMTLEVEL2	Assessment		
	PV405	PV		
40.6	62304-02	Module	CT40_6-17	Module
	62306-02	Module		
	62306-02	Module		
	PMT	Assessment		
	PMTCUSTOM	Assessment		
	PMTLEVEL2	Assessment		
	PV406	PV		
40.7	62304-02	Module	CT40_7-17	Module
	PMT	Assessment		
	PMTCUSTOM	Assessment		
	PMTLEVEL2	Assessment		
	PV407	PV		

NCCER Pipeline Operational Qualification (OQ) Crosswalk

API Task Number



For this task...

If you used this product...

Use this product now.

API Task Number	1st & 2nd Edition Product	Product Type	3rd Edition NCCER CT Modules	3rd Edition Product
40.8	62306-02	Module	CT40_8-17	Module
	PMT	Assessment		
	PMTCUSTOM	Assessment		
	PMTLEVEL2	Assessment		
	PV408	PV		
40.9	62306-02	Module	CT40_9-17	Module
	PMT	Assessment		
	PMTCUSTOM	Assessment		
	PMTLEVEL2	Assessment		
	PV409	PV		
40.91 <i>*obsolete task</i>	62304-02	Module	CT40_6-17	Module
	62306-02	Module		
	PMT	Assessment		
	PMTCUSTOM	Assessment		
	PMTLEVEL2	Assessment		
	PV409_1	PV		
41.0	62207-02	Module	CT41_0-17	Module
	GMT	Assessment		
	PMT	Assessment		
	PMTCUSTOM	Assessment		
	PMTLEVEL2	Assessment		
	PV410	PV		
42.1 <i>*obsolete task</i>	62308-02	Module	CT42_7-17	Module
	PMT	Assessment		
	PMTCUSTOM	Assessment		
	PMTLEVEL1	Assessment		
	PV421	PV		
42.2 <i>*obsolete task</i>	62308-02	Module	CT42_7-17	Module
	PMT	Assessment		
	PMTCUSTOM	Assessment		
	PMTLEVEL1	Assessment		
	PV422	PV		
42.3 <i>*obsolete task</i>	62308-02	Module	CT42_7-17	Module
	PMT	Assessment		
	PMTCUSTOM	Assessment		
	PMTLEVEL1	Assessment		
	PV423	PV		

NCCER Pipeline Operational Qualification (OQ) Crosswalk

API Task Number



For this task...

If you used this product...

Use this product now.

API Task Number	1st & 2nd Edition Product	Product Type	3rd Edition NCCER CT Modules	3rd Edition Product
42.4 *obsolete task	62308-02	Module	CT42_7-17	Module
	PMT	Assessment		
	PMTCUSTOM	Assessment		
	PMTLEVEL1	Assessment		
	PV424	PV		
42.5 *obsolete task	62308-02	Module	CT42_7-17	Module
	PMT	Assessment		
	PMTCUSTOM	Assessment		
	PMTLEVEL1	Assessment		
	PV425	PV		
42.6 *obsolete task	62308-02	Module	CT42_7-17	Module
	PMT	Assessment		
	PMTCUSTOM	Assessment		
	PMTLEVEL1	Assessment		
	PV426	PV		
42.7	62304-02	Module	CT42_7-17	Module
	PMT	Assessment		
	PMTCUSTOM	Assessment		
	PMTLEVEL1	Assessment		
	PV427	PV		
43.1 *obsolete task	65106-02	Module	CT64_1-17	Module
	Control	Assessment		
	PV431	PV		
43.2 *obsolete task	65106-02	Module	CT64_2-17	Module
	Control	Assessment		
	PV432	PV		
43.3 *obsolete task	62206-02	Module	CT64_3-17	Module
	65105-02	Module		
	Control	Assessment		
	PMT	Assessment		
	PMTCUSTOM	Assessment		
	PMTINSP	Assessment		
	PV433	PV		
43.4 *obsolete task	65106-02	Module	CT64_4-17	Module
	Control	Assessment		
	PV434	PV		

NCCER Pipeline Operational Qualification (OQ) Crosswalk API Task Number



For this task...

If you used this product...

Use this product now.

API Task Number	1st & 2nd Edition Product	Product Type	3rd Edition NCCER CT Modules	3rd Edition Product
44.1 <i>*obsolete task</i>	64209-02	Module	CT44_3-17 CT44_4-17 CT44_5-17 CT44_6-17 CT44_7-17 CT44_8-17	Module
	64209-02	Module		
	64209-02	Module		
	64209-02	Module		
	64209-02	Module		
	64209-02	Module		
	EIPT	Assessment		
PV441	PV			
44.2 <i>*obsolete task</i>	64209-02	Module	CT44_3-17 CT44_4-17 CT44_5-17 CT44_6-17 CT44_7-17 CT44_8-17	Module
	64209-02	Module		
	64209-02	Module		
	64209-02	Module		
	64209-02	Module		
	64209-02	Module		
	EIPT	Assessment		
PV442	PV			
44.3	64209-02	Module	CT44_3-17	Module
	EIPT	Assessment		
	PV443	PV		
44.4	64209-02	Module	CT44_4-17	Module
	EIPT	Assessment		
	PV444	PV		
44.5	64209-02	Module	CT44_5-17	Module
	EIPT	Assessment		
	PV445	PV		
44.6	64209-02	Module	CT44_6-17	Module
	EIPT	Assessment		
	PV446	PV		
44.7	64209-02	Module	CT44_7-17	Module
	EIPT	Assessment		
	PV447	PV		
44.8	64209-02	Module	CT44_8-17	Module
	EIPT	Assessment		
	PV448	PV		
50.0	67104-02	Module	CT50_0-17	Module
	67105-02	Module		
	GPO	Assessment		
	PV500	PV		

NCCER Pipeline Operational Qualification (OQ) Crosswalk

API Task Number



For this task...

If you used this product...

Use this product now.

API Task Number	1st & 2nd Edition Product	Product Type	3rd Edition NCCER CT Modules	3rd Edition Product
51.0	67104-02	Module	CT51_0-17	Module
	67105-02	Module		
	GPO	Assessment		
	PV510	PV		
52.1	62206-02	Module	CT52_1-17	Module
	62206-14	Module		
	AEN62PMTCS03	Assessment		
	GMT	Assessment		
	PV521	PV		
52.2	62206-02	Module	CT52_2-17	Module
	62206-14	Module		
	AEN62PMTCS03	Assessment		
	GMT	Assessment		
	PV522	PV		
52.3	62206-02	Module	CT52_3-17	Module
	62206-14	Module		
	AEN62PMTCS03	Assessment		
	GMT	Assessment		
	PV523	PV		
54.0	67104-02	Module	CT54_0-17	Module
	67105-02	Module		
	GPO	Assessment		
	PV540	PV		
55.0	64210-02	Module	CT55_0-17	Module
	EIPT	Assessment		
	PV550	PV		
56.0	67104-02	Module	CT56_0-17	Module
	67105-02	Module		
	GPO	Assessment		
	PV560	PV		
57.0	67104-02	Module	CT57_0-17	Module
	67105-02	Module		
	GPO	Assessment		
	PV570	PV		
58.0	67104-02	Module	CT58_0-17	Module
	67105-02	Module		
	GPO	Assessment		
	PV580	PV		

NCCER Pipeline Operational Qualification (OQ) Crosswalk

API Task Number



For this task...

If you used this product...

Use this product now.

API Task Number	1st & 2nd Edition Product	Product Type	3rd Edition NCCER CT Modules	3rd Edition Product
59.0	62310-02	Module	CT59_0-17	Module
	GMT	Assessment		
	PV590	PV		
63.1	60105-02	Module	CT63_1-17	Module
	FIELD	Assessment		
	PV631	PV		
63.2	60105-02	Module	CT63_2-17	Module
	FIELD	Assessment		
	PV632	PV		
63.3	60106-02	Module	CT63_3-17	Module
	62206-02	Module		
	FIELD	Assessment		
	PMT	Assessment		
	PMTCUSTOM	Assessment		
	PMTINSP	Assessment		
	PV633	PV		
63.4	60105-02	Module	CT63_4-17	Module
	FIELD	Assessment		
	PV634	PV		
64.1	65106-02	Module	CT64_1-17	Module
	Control	Assessment		
	PV641	PV		
64.2	65106-02	Module	CT64_2-17	Module
	Control	Assessment		
	PV642	PV		
64.3	62206-02	Module	CT64_3-17	Module
	65105-02	Module		
	Control	Assessment		
	PMT	Assessment		
	PMTCUSTOM	Assessment		
	PMTINSP	Assessment		
	PV643	PV		
64.4	65106-02	Module	CT64_4-17	Module
	Control	Assessment		
	PV644	PV		
65.1	67104-02	Module	CT65_1-17	Module
	67105-02	Module		
	GPO	Assessment		
	PV651	PV		

NCCER Pipeline Operational Qualification (OQ) Crosswalk API Task Number



For this task...

If you used this product...

Use this product now.

API Task Number	1st & 2nd Edition Product	Product Type	3rd Edition NCCER CT Modules	3rd Edition Product
65.2	67104-02	Module	CT65_2-17	Module
	67105-02	Module		
	GPO	Assessment		
	PV652	PV		
65.3	67104-02	Module	CT65_3-17	Module
	67105-02	Module		
	GPO	Assessment		
	PV653	PV		
65.4	67104-02	Module	CT65_4-17	Module
	67105-02	Module		
	GPO	Assessment		
	PV654	PV		
AOC - Control Center	65102-02	Module	AOCCC-17	Module
	71102-14	Module		
	AOCCC_03	Assessment		
	AOCCC_04	Assessment		
	N/A	PV		
AOC - Field	66102-02	Module	AOCFG-17	Module
	67107-02	Module		
	71101-14	Module		
	AOCFG	Assessment		
	AOCFG_02	Assessment		
	N/A	PV		
CC	N/A	Module	CTCC-17	Module
	N/A	Assessment		
	PVCC	PV		
FB	08306-07	Module	CTFB-17	Module
	62311-14	Module		
	AEN62PMTCS03	Assessment		
	PMTCUSTOM	Assessment		
	PMTLEVEL1	Assessment		
	PMTLEVEL2	Assessment		
	PVFB	PV		
MP	62211-14	Module	CTMP-17	Module
	N/A	Module		
	AEN62PMTCS03	Assessment		
	PVMP	PV		

NCCER Pipeline Operational Qualification (OQ) Crosswalk API Task Number



For this task...

If you used this product...

Use this product now.

API Task Number	1st & 2nd Edition Product	Product Type	3rd Edition NCCER CT Modules	3rd Edition Product
TB	62208-14	Module	CTTB-17	Module
	N/A	Module		
	AEN62PMTCS03	Assessment		
	PVTB	PV		
TP	08205-06	Module	CTTP-17	Module
	62210-14	Module		
	AEN62PMTCS03	Assessment		
	PMTCUSTOM	Assessment		
	PMTLEVEL1	Assessment		
	PMTLEVEL2	Assessment		
	PVTP	PV		

NCCER Pipeline Operational Qualification (OQ) Crosswalk 1st - 2nd Edition NCCER Modules



*If you used this
module...*

For this task...

Use this product now.

1st & 2nd Edition Modules	API Task Number *obsolete tasks (refer to 3rd edition CT module)	3rd Edition NCCER CT Modules	3rd Edition Product
08205-06	TP	CTTP-17	Module
08306-07	FB	CTFB-17	Module
60105-02	63.1	CT63_1-17	Module
	63.2	CT63_2-17	Module
	63.4	CT63_4-17	Module
60106-02	63.3	CT63_3-17	Module
61103-02	14.1	CT14_1-17	Module
	17.1*	CT14_1-17	Module
61104-02	8.1	CT8_1-17	Module
	8.2	CT8_2-17	Module
	8.3	CT8_3-17	Module
61105-02	5.1	CT5_1-17	Module
	5.2	CT5_2-17	Module
	5.3	CT5_3-17	Module
61106-02	7.1	CT7_1-17	Module
	7.2	CT7_2-17	Module
	7.3	CT7_3-17	Module
	7.5	CT7_5-17	Module
	13.1*	CT7_2-17	Module
	13.2*	CT7_3-17	Module
61107-02	13.4*	CT7_5-17	Module
61108-02	1.1	CT1_1-17	Module
	1.5	CT1_5-17	Module
	3.0	CT3_0-17	Module
	3.1*	CT3_0-17	Module
	3.2*	CT3_0-17	Module
	9.6	CT9_6-17	Module
61109-02	2.1	CT2_1-17	Module
	2.2	CT2_2-17	Module
	2.3	CT2_3-17	Module
	2.4	CT2_4-17	Module
61110-02	12.0	CT12_0-17	Module
61111-02	10.1	CT10_1-17	Module
	10.2	CT10_2-17	Module
	11.0	CT11_0-17	Module
61201-02	9.2	CT9_2-17	Module
	9.3	CT9_3-17	Module
	9.4	CT9_4-17	Module

NCCER Pipeline Operational Qualification (OQ) Crosswalk 1st - 2nd Edition NCCER Modules



If you used this module...

For this task...

Use this product now.

1st & 2nd Edition Modules	API Task Number *obsolete tasks (refer to 3rd edition CT module)	3rd Edition NCCER CT Modules	3rd Edition Product
61202-02	4.1	CT4_1-17	Module
	4.2	CT4_2-17	Module
	4.3	CT4_3-17	Module
61203-02	1.3	CT1_3-17	Module
	9.1	CT9_1-17	Module
61204-02	9.5	CT9_5-17	Module
61205-02	1.2	CT1_2-17	Module
	1.4	CT1_4-17	Module
61206-02	7.7	CT7_7-17	Module
61207-02	7.4	CT7_4-17	Module
	13.3*	CT7_4-17	Module
61208-02	7.6	CT7_6-17	Module
	13.5*	CT7_6-17	Module
61304-02	9.5	CT9_5-17	Module
62106-02	14.1	CT14_1-17	Module
	14.2	CT14_2-17	Module
	14.3*	CT14_2-17	Module
	14.4*	CT14_2-17	Module
	14.5	CT14_5-17	Module
62106-14	14.1	CT14_1-17	Module
	14.2	CT14_2-17	Module
	14.5	CT14_5-17	Module
62107-02	14.1	CT14_1-17	Module
	14.5	CT14_5-17	Module
	17.1*	CT14_1-17	Module
	17.2*	CT14_5-17	Module
	17.3*	CT14_5-17	Module
	32.0	CT32_0-17	Module
39.0	CT39_0-17	Module	
62109-14	15.1	CT15_1-17	Module
62201-02	15.1	CT15_1-17	Module
	15.2*	CT15_1-17	Module
	16.1	CT16_1-17	Module
	16.2*	CT16_1-17	Module
	16.3*	CT16_1-17	Module

NCCER Pipeline Operational Qualification (OQ) Crosswalk 1st - 2nd Edition NCCER Modules



If you used this module...

For this task...

Use this product now.

1st & 2nd Edition Modules	API Task Number *obsolete tasks (refer to 3rd edition CT module)	3rd Edition NCCER CT Modules	3rd Edition Product
62202-02	27.1	CT27_1-17	Module
	27.2	N/A	Retired - No longer available for qualification as of September 2, 2017
	27.3	N/A	Retired - No longer available for qualification as of September 2, 2017
62202-14	27.1	CT27_1-17	Module
62203-02	20.0	CT20_0-17	Module
	20.1*	CT20_0-17	Module
	20.2*	CT20_0-17	Module
	20.3*	CT20_0-17	Module
	20.4*	CT20_0-17	Module
62203-14	20.0	CT20_0-17	Module
62204-02	5.1	CT5_1-17	Module
62205-02	38.1	CT38_1-17	Module
	38.2	N/A	Retired - No longer available for qualification as of September 2, 2017
	38.3	CT38_3-17	Module
62206-02	15.1	CT15_1-17	Module
	18.1*	CT15_1-17	Module
	18.2*	CT63_3-17	Module
	18.2*	CT64_3-17	Module
	43.3*	CT64_3-17	Module
	52.1	CT52_1-17	Module
	52.2	CT52_2-17	Module
	52.3	CT52_3-17	Module
	63.3	CT63_3-17	Module
	64.3	CT64_3-17	Module
62206-14	52.1	CT52_1-17	Module
	52.2	CT52_2-17	Module
	52.3	CT52_3-17	Module

NCCER Pipeline Operational Qualification (OQ) Crosswalk 1st - 2nd Edition NCCER Modules



*If you used this
module...*

For this task...

Use this product now.

1st & 2nd Edition Modules	API Task Number *obsolete tasks (refer to 3rd edition CT module)	3rd Edition NCCER CT Modules	3rd Edition Product
62207-02	41.0	CT41_0-17	Module
62208-14	TB	CTTB-17	Module
62209-14	28.0	CT28_0-17	Module
62210-14	TP	CTTP-17	Module
62211-14	MP	CTMP-17	Module
62212-14	32.0	CT32_0-17	Module
	39.0	CT39_0-17	Module
62302-02	32.0	CT32_0-17	Module
	34.0	CT34_0-17	Module
	35.0*	CT32_0-17	Module
62303-02	29.1	CT29_1-17	Module
	29.2	CT29_2-17	Module
62304-02	37.0	CT37_0-17	Module
	40.1	CT40_1-17	Module
	40.2*	CT40_1-17	Module
	40.3	CT40_3-17	Module
	40.4	CT40_4-17	Module
	40.5	CT40_5-17	Module
	40.6	CT40_6-17	Module
	40.7	CT40_7-17	Module
	40.91*	CT40_6-17	Module
42.7	CT42_7-17	Module	
62305-02	33.1	CT33_1-17	Module
	33.2	CT33_2-17	Module
	33.3	CT33_3-17	Module
	34.0	CT34_0-17	Module
62306-02	40.91*	CT40_6-17	Module
	40.6	CT40_6-17	Module
	40.6	CT40_6-17	Module
	40.8	CT40_8-17	Module
	40.9	CT40_9-17	Module
62308-02	42.1*	CT42_7-17	Module
	42.2*	CT42_7-17	Module
	42.3*	CT42_7-17	Module
	42.4*	CT42_7-17	Module
	42.5*	CT42_7-17	Module
	42.6*	CT42_7-17	Module

NCCER Pipeline Operational Qualification (OQ) Crosswalk 1st - 2nd Edition NCCER Modules



*If you used this
module...*

For this task...

Use this product now.

1st & 2nd Edition Modules	API Task Number *obsolete tasks (refer to 3rd edition CT module)	3rd Edition NCCER CT Modules	3rd Edition Product
62309-02	36.1	CT36_1-17	Module
	36.2	CT36_2-17	Module
	36.3	CT36_3-17	Module
62310-02	59.0	CT59_0-17	Module
62311-14	FB	CTFB-17	Module
62401-02	38.4	N/A	Retired - No longer available for qualification as of September 2, 2017
	38.5	N/A	Retired - No longer available for qualification as of September 2, 2017
	38.6	N/A	Retired - No longer available for qualification as of September 2, 2017
	38.7	N/A	Retired - No longer available for qualification as of September 2, 2017
63107-02	19.1	CT19_1-17	Module
	19.2	CT19_2-17	Module
	19.3	CT19_3-17	Module
	19.4	CT19_4-17	Module
63204-02	20.1*	CT20_0-17	Module
	20.2*	CT20_0-17	Module
	20.3*	CT20_0-17	Module
	20.4*	CT20_0-17	Module
	21.2	CT21_2-17	Module
	21.3	CT21_3-17	Module

NCCER Pipeline Operational Qualification (OQ) Crosswalk 1st - 2nd Edition NCCER Modules



If you used this module...

For this task...

Use this product now.

1st & 2nd Edition Modules	API Task Number *obsolete tasks (refer to 3rd edition CT module)	3rd Edition NCCER CT Modules	3rd Edition Product		
63205-02	22.0*	CT22_1-17	Module		
	22.0*	CT22_2-17	Module		
	22.1	CT22_1-17	Module		
	22.2	CT22_2-17	Module		
	23.1	CT23_1-17	Module		
	23.2	CT23_2-17	Module		
	24.1	CT24_1-17	Module		
	24.2	CT24_2-17	Module		
63306-02	19.6	CT19_6-17	Module		
	21.1	CT21_1-17	Module		
63307-02	19.7	CT19_7-17	Module		
	21.4	CT21_4-17	Module		
63308-02	19.5	CT19_5-17	Module		
	21.5	CT21_5-17	Module		
64206-02	25.1	CT25_1-17	Module		
	25.2	CT25_2-17	Module		
	30.0	CT30_0-17	Module		
	31.0	CT31_0-17	Module		
64207-02	26.0	CT26_0-17	Module		
64208-02	19.5	CT19_5-17	Module		
64209-02	44.1*	CT44_3-17	Module		
		CT44_4-17	Module		
		CT44_5-17	Module		
		CT44_6-17	Module		
		CT44_7-17	Module		
		CT44_8-17	Module		
	44.2*	CT44_3-17	Module		
		CT44_4-17	Module		
		CT44_5-17	Module		
		CT44_6-17	Module		
		CT44_7-17	Module		
		CT44_8-17	Module		
		64209-02	44.3	CT44_3-17	Module
			44.4	CT44_4-17	Module
44.5	CT44_5-17		Module		
44.6	CT44_6-17		Module		
44.7	CT44_7-17		Module		
44.8	CT44_8-17		Module		
64210-02	55.0	CT55_0-17	Module		

NCCER Pipeline Operational Qualification (OQ) Crosswalk 1st - 2nd Edition NCCER Modules



If you used this module...

For this task...

Use this product now.

1st & 2nd Edition Modules	API Task Number *obsolete tasks (refer to 3rd edition CT module)	3rd Edition NCCER CT Modules	3rd Edition Product
65102-02	AOC - Control Center	AOCCC-17	Module
65105-02	43.3*	CT64_3-17	Module
	64.3	CT64_3-17	Module
65106-02	43.1*	CT64_1-17	Module
	43.2*	CT64_2-17	Module
	43.4*	CT64_4-17	Module
	64.1	CT64_1-17	Module
	64.2	CT64_2-17	Module
	64.4	CT64_4-17	Module
66102-02	AOC - Field	AOCFG-17	Module
67104-02	50.0	CT50_0-17	Module
	51.0	CT51_0-17	Module
	54.0	CT54_0-17	Module
	56.0	CT56_0-17	Module
	57.0	CT57_0-17	Module
	58.0	CT58_0-17	Module
	65.1	CT65_1-17	Module
	65.2	CT65_2-17	Module
	65.3	CT65_3-17	Module
	65.4	CT65_4-17	Module
67105-02	50.0	CT50_0-17	Module
	51.0	CT51_0-17	Module
	54.0	CT54_0-17	Module
	56.0	CT56_0-17	Module
	57.0	CT57_0-17	Module
	58.0	CT58_0-17	Module
	65.1	CT65_1-17	Module
	65.2	CT65_2-17	Module
	65.3	CT65_3-17	Module
	65.4	CT65_4-17	Module
67107-02	AOC - Field	AOCFG-17	Module
71101-14	AOC - Field	AOCFG-17	Module
71102-14	AOC - Control Center	AOCCC-17	Module
N/A	CC	CTCC-17	Module
N/A	MP	CTMP-17	Module
N/A	TB	CTTB-17	Module

NCCER Pipeline Operational Qualification (OQ) Crosswalk Assessments



*If you used this
assessment...*

For this task...

Use this product now.

Assessment	API Task Number <small>*obsolete tasks (refer to 3rd edition CT module)</small>	3rd Edition NCCER CT Modules	3rd Edition Product
AEN62PMTCT03	14.1	CT14_1-17	Module
	14.2	CT14_2-17	Module
	14.5	CT14_5-17	Module
	15.1	CT15_1-17	Module
	20.0	CT20_0-17	Module
	27.1	CT27_1-17	Module
	28.0	CT28_0-17	Module
	32.0	CT32_0-17	Module
	39.0	CT39_0-17	Module
	52.1	CT52_1-17	Module
	52.2	CT52_2-17	Module
	52.3	CT52_3-17	Module
	FB	CTFB-17	Module
	MP	CTMP-17	Module
	TB	CTTB-17	Module
TP	CTTP-17	Module	
AOCCC_03	AOC - Control Center	AOCCC-17	Module
AOCCC_04	AOC - Control Center	AOCCC-17	Module
AOCFG	AOC - Field	AOCFG-17	Module
AOCFG_02	AOC - Field	AOCFG-17	Module
Control	43.1*	CT64_1-17	Module
	43.2*	CT64_2-17	Module
	43.3*	CT64_3-17	Module
	43.4*	CT64_4-17	Module
	64.1	CT64_1-17	Module
	64.2	CT64_2-17	Module
	64.3	CT64_3-17	Module
	64.4	CT64_4-17	Module
CPFT1I <i>(continues on next page)</i>	2.1	CT2_1-17	Module
	2.2	CT2_2-17	Module
	2.3	CT2_3-17	Module
	2.4	CT2_4-17	Module
	5.1	CT5_1-17	Module
	5.2	CT5_2-17	Module
	5.3	CT5_3-17	Module
	7.2	CT7_2-17	Module
	7.3	CT7_3-17	Module
	7.4	CT7_4-17	Module
	7.5	CT7_5-17	Module
	7.6	CT7_6-17	Module

NCCER Pipeline Operational Qualification (OQ) Crosswalk Assessments



*If you used this
assessment...*

For this task...

Use this product now.

Assessment	API Task Number <small>*obsolete tasks (refer to 3rd edition CT module)</small>	3rd Edition NCCER CT Modules	3rd Edition Product
CPFT1I <i>(continued from previous page)</i>	7.7	CT7_7-17	Module
	9.5	CT9_5-17	Module
	10.1	CT10_1-17	Module
	12.0	CT12_0-17	Module
	13.1*	CT7_2-17	Module
	13.2*	CT7_3-17	Module
	13.3*	CT7_4-17	Module
	13.4*	CT7_5-17	Module
	13.5*	CT7_6-17	Module
CPFT1M	1.1	CT1_1-17	Module
	1.4	CT1_4-17	Module
	1.5	CT1_5-17	Module
	3.0	CT3_0-17	Module
	3.1*	CT3_0-17	Module
	3.2*	CT3_0-17	Module
	8.1	CT8_1-17	Module
	8.2	CT8_2-17	Module
	8.3	CT8_3-17	Module
	9.6	CT9_6-17	Module
	10.2	CT10_2-17	Module
	11.0	CT11_0-17	Module
CPFT2	1.2	CT1_2-17	Module
	1.3	CT1_3-17	Module
	3.0	CT3_0-17	Module
	3.2*	CT3_0-17	Module
	4.1	CT4_1-17	Module
	4.2	CT4_2-17	Module
	5.2	CT5_2-17	Module
	5.3	CT5_3-17	Module
	7.1	CT7_1-17	Module
	9.2	CT9_2-17	Module
CPFT3	4.3	CT4_3-17	Module
	9.1	CT9_1-17	Module
	9.3	CT9_3-17	Module
	9.4	CT9_4-17	Module

NCCER Pipeline Operational Qualification (OQ) Crosswalk Assessments



*If you used this
assessment...*

For this task...

Use this product now.

Assessment	API Task Number <small>*obsolete tasks (refer to 3rd edition CT module)</small>	3rd Edition NCCER CT Modules	3rd Edition Product
EIPT	19.5	CT19_5-17	Module
	25.1	CT25_1-17	Module
	25.2	CT25_2-17	Module
	26.0	CT26_0-17	Module
	30.0	CT30_0-17	Module
	31.0	CT31_0-17	Module
	44.1*	CT44_3-17	Module
	44.2*	CT44_3-17	Module
	44.3	CT44_3-17	Module
	44.4	CT44_4-17	Module
	44.5	CT44_5-17	Module
	44.6	CT44_6-17	Module
	44.7	CT44_7-17	Module
	44.8	CT44_8-17	Module
	55.0	CT55_0-17	Module
FIELD	63.1	CT63_1-17	Module
	63.2	CT63_2-17	Module
	63.3	CT63_3-17	Module
	63.4	CT63_4-17	Module
GMT	41.0	CT41_0-17	Module
	52.1	CT52_1-17	Module
	52.2	CT52_2-17	Module
	52.3	CT52_3-17	Module
	59.0	CT59_0-17	Module
GPO	50.0	CT50_0-17	Module
	51.0	CT51_0-17	Module
	54.0	CT54_0-17	Module
	56.0	CT56_0-17	Module
	57.0	CT57_0-17	Module
	58.0	CT58_0-17	Module
	65.1	CT65_1-17	Module
	65.2	CT65_2-17	Module
	65.3	CT65_3-17	Module
65.4	CT65_4-17	Module	

NCCER Pipeline Operational Qualification (OQ) Crosswalk Assessments



*If you used this
assessment...*

For this task...

Use this product now.

Assessment	API Task Number <small>*obsolete tasks (refer to 3rd edition CT module)</small>	3rd Edition NCCER CT Modules	3rd Edition Product
MPT	19.1	CT19_1-17	Module
	19.2	CT19_2-17	Module
	19.3	CT19_3-17	Module
	19.4	CT19_4-17	Module
	19.5	CT19_5-17	Module
	19.6	CT19_6-17	Module
	19.7	CT19_7-17	Module
	20.0	CT20_0-17	Module
	20.1*	CT20_0-17	Module
	20.2*	CT20_0-17	Module
	20.3*	CT20_0-17	Module
	20.4*	CT20_0-17	Module
	21.1	CT21_1-17	Module
	21.2	CT21_2-17	Module
	21.3	CT21_3-17	Module
	21.4	CT21_4-17	Module
	21.5	CT21_5-17	Module
	22.0*	CT22_1-17	Module
	22.1	CT22_1-17	Module
	22.2	CT22_2-17	Module
	23.1	CT23_1-17	Module
	23.2	CT23_2-17	Module
	24.1	CT24_1-17	Module
	24.2	CT24_2-17	Module
PMT <i>(continues on next page)</i>	7.2	CT7_2-17	Module
	7.3	CT7_3-17	Module
	7.4	CT7_4-17	Module
	9.5	CT9_5-17	Module
	13.1*	CT7_2-17	Module
	13.2*	CT7_3-17	Module
	13.3*	CT7_4-17	Module
	13.4*	CT7_5-17	Module
	13.5*	CT7_6-17	Module
	14.1	CT14_1-17	Module
	14.2	CT14_2-17	Module
	14.3*	CT14_2-17	Module
	14.4*	CT14_2-17	Module
	14.5	CT14_5-17	Module
	15.1	CT15_1-17	Module
	15.2*	CT15_1-17	Module

NCCER Pipeline Operational Qualification (OQ) Crosswalk Assessments



*If you used this
assessment...*

For this task...

Use this product now.

Assessment	API Task Number <small>*obsolete tasks (refer to 3rd edition CT module)</small>	3rd Edition NCCER CT Modules	3rd Edition Product
PMT <i>(continued from previous page)</i> <i>(continues on next page)</i>	16.1	CT16_1-17	Module
	16.2*	CT16_1-17	Module
	16.3*	CT16_1-17	Module
	17.1*	CT14_1-17	Module
	17.2*	CT14_5-17	Module
	17.3*	CT14_5-17	Module
	18.1*	CT15_1-17	Module
	18.2*	CT63_3-17	Module
	20.0	CT20_0-17	Module
	20.1*	CT20_0-17	Module
	20.2*	CT20_0-17	Module
	20.3*	CT20_0-17	Module
	20.4*	CT20_0-17	Module
	27.1	CT27_1-17	Module
	27.2	N/A	Retired - No longer available for qualification as of September 2, 2017
	27.3	N/A	Retired - No longer available for qualification as of September 2, 2017
	28.0	CT28_0-17	Module
	29.1	CT29_1-17	Module
	29.2	CT29_2-17	Module
	32.0	CT32_0-17	Module
	33.1	CT33_1-17	Module
	33.2	CT33_2-17	Module
	33.3	CT33_3-17	Module
	34.0	CT34_0-17	Module
	35.0*	CT32_0-17	Module
	36.1	CT36_1-17	Module
	36.2	CT36_2-17	Module
	36.3	CT36_3-17	Module
	37.0	CT37_0-17	Module
	38.1	CT38_1-17	Module
	38.2	N/A	Retired - No longer available for qualification as of September 2, 2017

NCCER Pipeline Operational Qualification (OQ) Crosswalk Assessments



*If you used this
assessment...*

For this task...

Use this product now.

Assessment	API Task Number <small>*obsolete tasks (refer to 3rd edition CT module)</small>	3rd Edition NCCER CT Modules	3rd Edition Product
PMT <i>(continued from previous pages)</i>	38.3	CT38_3-17	Module
	39.0	CT39_0-17	Module
	40.1	CT40_1-17	Module
	40.2*	CT40_1-17	Module
	40.3	CT40_3-17	Module
	40.4	CT40_4-17	Module
	40.5	CT40_5-17	Module
	40.6	CT40_6-17	Module
	40.7	CT40_7-17	Module
	40.8	CT40_8-17	Module
	40.9	CT40_9-17	Module
	40.91*	CT40_6-17	Module
	41.0	CT41_0-17	Module
	42.1*	CT42_7-17	Module
	42.2*	CT42_7-17	Module
	42.3*	CT42_7-17	Module
	42.4*	CT42_7-17	Module
	42.5*	CT42_7-17	Module
	42.6*	CT42_7-17	Module
	42.7	CT42_7-17	Module
43.3*	CT64_3-17	Module	
63.3	CT63_3-17	Module	
64.3	CT64_3-17	Module	
PMTCUSTOM <i>(continues on next page)</i>	5.1	CT5_1-17	Module
	5.2	CT5_2-17	Module
	5.3	CT5_3-17	Module
	7.1	CT7_1-17	Module
	7.2	CT7_2-17	Module
	7.3	CT7_3-17	Module
	7.4	CT7_4-17	Module
	7.5	CT7_5-17	Module
	7.6	CT7_6-17	Module
	7.7	CT7_7-17	Module
	8.1	CT8_1-17	Module
	8.2	CT8_2-17	Module
	8.3	CT8_3-17	Module
	9.5	CT9_5-17	Module
	13.1*	CT7_2-17	Module
	13.2*	CT7_3-17	Module
	13.3*	CT7_4-17	Module

NCCER Pipeline Operational Qualification (OQ) Crosswalk Assessments



*If you used this
assessment...*

For this task...

Use this product now.

Assessment	API Task Number <small>*obsolete tasks (refer to 3rd edition CT module)</small>	3rd Edition NCCER CT Modules	3rd Edition Product
PMTCUSTOM <i>(continued from previous page)</i> <i>(continues on next page)</i>	13.4*	CT7_5-17	Module
	13.5*	CT7_6-17	Module
	14.1	CT14_1-17	Module
	14.2	CT14_2-17	Module
	14.3*	CT14_2-17	Module
	14.4*	CT14_2-17	Module
	14.5	CT14_5-17	Module
	15.1	CT15_1-17	Module
	15.2*	CT15_1-17	Module
	16.1	CT16_1-17	Module
	16.2*	CT16_1-17	Module
	16.3*	CT16_1-17	Module
	17.1*	CT14_1-17	Module
	17.2*	CT14_5-17	Module
	17.3*	CT14_5-17	Module
	18.1*	CT15_1-17	Module
	18.2*	CT63_3-17	Module
	20.0	CT20_0-17	Module
	20.1*	CT20_0-17	Module
	20.2*	CT20_0-17	Module
	20.3*	CT20_0-17	Module
	20.4*	CT20_0-17	Module
	27.1	CT27_1-17	Module
	27.2	N/A	Retired - No longer available for qualification as of September 2, 2017
	27.3	N/A	Retired - No longer available for qualification as of September 2, 2017
	28.0	CT28_0-17	Module
	29.1	CT29_1-17	Module
	29.2	CT29_2-17	Module
	32.0	CT32_0-17	Module
	32.0	CT32_0-17	Module
33.1	CT33_1-17	Module	
33.2	CT33_2-17	Module	

NCCER Pipeline Operational Qualification (OQ) Crosswalk Assessments



*If you used this
assessment...*

For this task...

Use this product now.

Assessment	API Task Number <small>*obsolete tasks (refer to 3rd edition CT module)</small>	3rd Edition NCCER CT Modules	3rd Edition Product
PMTCUSTOM <i>(continued from previous pages)</i>	33.3	CT33_3-17	Module
	34.0	CT34_0-17	Module
	35.0*	CT32_0-17	Module
	36.1	CT36_1-17	Module
	36.2	CT36_2-17	Module
	36.3	CT36_3-17	Module
	37.0	CT37_0-17	Module
	38.1	CT38_1-17	Module
	38.2	N/A	Retired - No longer available for qualification as of September 2, 2017
	38.3	CT38_3-17	Module
	39.0	CT39_0-17	Module
	40.1	CT40_1-17	Module
	40.2*	CT40_1-17	Module
	40.3	CT40_3-17	Module
	40.4	CT40_4-17	Module
	40.5	CT40_5-17	Module
	40.6	CT40_6-17	Module
	40.7	CT40_7-17	Module
	40.8	CT40_8-17	Module
	40.9	CT40_9-17	Module
	40.91*	CT40_6-17	Module
	41.0	CT41_0-17	Module
	42.1*	CT42_7-17	Module
	42.2*	CT42_7-17	Module
	42.3*	CT42_7-17	Module
	42.4*	CT42_7-17	Module
	42.5*	CT42_7-17	Module
	42.6*	CT42_7-17	Module
	42.7	CT42_7-17	Module
	43.3*	CT64_3-17	Module
	63.3	CT63_3-17	Module
	64.3	CT64_3-17	Module
FB	CTFB-17	Module	
TP	CTTP-17	Module	

NCCER Pipeline Operational Qualification (OQ) Crosswalk Assessments



*If you used this
assessment...*

For this task...

Use this product now.

Assessment	API Task Number <small>*obsolete tasks (refer to 3rd edition CT module)</small>	3rd Edition NCCER CT Modules	3rd Edition Product
PMTINSP	5.1	CT5_1-17	Module
	5.2	CT5_2-17	Module
	5.3	CT5_3-17	Module
	8.1	CT8_1-17	Module
	8.2	CT8_2-17	Module
	8.3	CT8_3-17	Module
	16.1	CT16_1-17	Module
	16.2*	CT16_1-17	Module
	16.3*	CT16_1-17	Module
	18.1*	CT15_1-17	Module
	18.2*	CT63_3-17	Module
	20.0	CT20_0-17	Module
	20.1*	CT20_0-17	Module
	20.2*	CT20_0-17	Module
	20.3*	CT20_0-17	Module
	20.4*	CT20_0-17	Module
	27.1	CT27_1-17	Module
	27.2		
	27.3		
	32.0	CT32_0-17	Module
	34.0	CT34_0-17	Module
	38.1	CT38_1-17	Module
	38.2	N/A	Retired - No longer available for qualification as of September 2, 2017
	38.3	CT38_3-17	Module
	39.0	CT39_0-17	Module
	43.3*	CT64_3-17	Module
63.3	CT63_3-17	Module	
64.3	CT64_3-17	Module	

NCCER Pipeline Operational Qualification (OQ) Crosswalk Assessments



*If you used this
assessment...*

For this task...

Use this product now.

Assessment	API Task Number <small>*obsolete tasks (refer to 3rd edition CT module)</small>	3rd Edition NCCER CT Modules	3rd Edition Product
PMTLEVEL1	7.1	CT7_1-17	Module
	7.2	CT7_2-17	Module
	7.3	CT7_3-17	Module
	7.4	CT7_4-17	Module
	7.5	CT7_5-17	Module
	7.6	CT7_6-17	Module
	7.7	CT7_7-17	Module
	9.5	CT9_5-17	Module
	13.1*	CT7_2-17	Module
	13.2*	CT7_3-17	Module
	13.3*	CT7_4-17	Module
	13.4*	CT7_5-17	Module
	13.5*	CT7_6-17	Module
	14.1	CT14_1-17	Module
	14.2	CT14_2-17	Module
	14.3*	CT14_2-17	Module
	14.4*	CT14_2-17	Module
	14.5	CT14_5-17	Module
	15.1	CT15_1-17	Module
	15.2*	CT15_1-17	Module
	17.1*	CT14_1-17	Module
	17.2*	CT14_5-17	Module
	17.3*	CT14_5-17	Module
	28.0	CT28_0-17	Module
	29.1	CT29_1-17	Module
	29.2	CT29_2-17	Module
	32.0	CT32_0-17	Module
	39.0	CT39_0-17	Module
	42.1*	CT42_7-17	Module
	42.2*	CT42_7-17	Module
	42.3*	CT42_7-17	Module
	42.4*	CT42_7-17	Module
	42.5*	CT42_7-17	Module
	42.6*	CT42_7-17	Module
42.7	CT42_7-17	Module	
FB	CTFB-17	Module	
TP	CTTP-17	Module	

NCCER Pipeline Operational Qualification (OQ) Crosswalk Assessments



*If you used this
assessment...*

For this task...

Use this product now.

Assessment	API Task Number <small>*obsolete tasks (refer to 3rd edition CT module)</small>	3rd Edition NCCER CT Modules	3rd Edition Product
PMTLEVEL2	8.1	CT8_1-17	Module
	8.2	CT8_2-17	Module
	8.3	CT8_3-17	Module
	9.5	CT9_5-17	Module
	14.1	CT14_1-17	Module
	14.5	CT14_5-17	Module
	15.1	CT15_1-17	Module
	15.2*	CT15_1-17	Module
	17.1*	CT14_1-17	Module
	17.2*	CT14_5-17	Module
	17.3*	CT14_5-17	Module
	29.1	CT29_1-17	Module
	29.2	CT29_2-17	Module
	32.0	CT32_0-17	Module
	32.0	CT32_0-17	Module
	33.1	CT33_1-17	Module
	33.2	CT33_2-17	Module
	33.3	CT33_3-17	Module
	35.0*	CT32_0-17	Module
	36.1	CT36_1-17	Module
	36.2	CT36_2-17	Module
	36.3	CT36_3-17	Module
	37.0	CT37_0-17	Module
	39.0	CT39_0-17	Module
	40.1	CT40_1-17	Module
	40.2*	CT40_1-17	Module
	40.3	CT40_3-17	Module
	40.4	CT40_4-17	Module
	40.5	CT40_5-17	Module
	40.6	CT40_6-17	Module
	40.7	CT40_7-17	Module
	40.8	CT40_8-17	Module
	40.9	CT40_9-17	Module
40.91*	CT40_6-17	Module	
41.0	CT41_0-17	Module	
FB	CTFB-17	Module	
TP	CTTP-17	Module	
N/A	CC	CTCC-17	Module

NCCER Pipeline Operational Qualification (OQ) Crosswalk Assessments



If you used this assessment...

For this task...

Use this product now.

Assessment	API Task Number <small>*obsolete tasks (refer to 3rd edition CT module)</small>	3rd Edition NCCER CT Modules	3rd Edition Product
N/A	38.4	N/A	Retired - No longer available for qualification as of September 2, 2017
N/A	38.5	N/A	Retired - No longer available for qualification as of September 2, 2017
N/A	38.6	N/A	Retired - No longer available for qualification as of September 2, 2017
N/A	38.7	N/A	Retired - No longer available for qualification as of September 2, 2017

NCCER Pipeline Operational Qualification (OQ) Crosswalk Performance Verification (PV)



If you used this PV...

For this task...

Use this product now.

Performance Verification	API Task Number <small>*obsolete tasks (refer to 3rd edition CT module)</small>	3rd Edition NCCER CT Modules	3rd Edition Product
N/A	AOC - Control Center	AOCCC-17	Module
N/A	AOC - Field	AOCFG-17	Module
PV011	1.1	CT1_1-17	Module
PV012	1.2	CT1_2-17	Module
PV013	1.3	CT1_3-17	Module
PV014	1.4	CT1_4-17	Module
PV015	1.5	CT1_5-17	Module
PV021	2.1	CT2_1-17	Module
PV022	2.2	CT2_2-17	Module
PV023	2.3	CT2_3-17	Module
PV024	2.4	CT2_4-17	Module
PV030	3.0	CT3_0-17	Module
PV031	3.1*	CT3_0-17	Module
PV032	3.2*	CT3_0-17	Module
PV041	4.1	CT4_1-17	Module
PV042	4.2	CT4_2-17	Module
PV043	4.3	CT4_3-17	Module
PV051	5.1	CT5_1-17	Module
PV052	5.2	CT5_2-17	Module
PV053	5.3	CT5_3-17	Module
PV071	7.1	CT7_1-17	Module
PV072	7.2	CT7_2-17	Module
PV073	7.3	CT7_3-17	Module
PV074	7.4	CT7_4-17	Module
PV075	7.5	CT7_5-17	Module
PV076	7.6	CT7_6-17	Module
PV077	7.7	CT7_7-17	Module
PV081	8.1	CT8_1-17	Module
PV082	8.2	CT8_2-17	Module
PV083	8.3	CT8_3-17	Module
PV091	9.1	CT9_1-17	Module
PV092	9.2	CT9_2-17	Module
PV093	9.3	CT9_3-17	Module
PV094	9.4	CT9_4-17	Module
PV095	9.5	CT9_5-17	Module
PV096	9.6	CT9_6-17	Module
PV101	10.1	CT10_1-17	Module
PV102	10.2	CT10_2-17	Module
PV110	11.0	CT11_0-17	Module
PV120	12.0	CT12_0-17	Module

NCCER Pipeline Operational Qualification (OQ) Crosswalk Performance Verification (PV)



If you used this PV...

For this task...

Use this product now.

Performance Verification	API Task Number <small>*obsolete tasks (refer to 3rd edition CT module)</small>	3rd Edition NCCER CT Modules	3rd Edition Product
PV131	13.1*	CT7_2-17	Module
PV132	13.2*	CT7_3-17	Module
PV133	13.3*	CT7_4-17	Module
PV134	13.4*	CT7_5-17	Module
PV135	13.5*	CT7_6-17	Module
PV141	14.1	CT14_1-17	Module
PV142	14.2	CT14_2-17	Module
PV143	14.3*	CT14_2-17	Module
PV144	14.4*	CT14_2-17	Module
PV145	14.5	CT14_5-17	Module
PV151	15.1	CT15_1-17	Module
PV152	15.2*	CT15_1-17	Module
PV161	16.1	CT16_1-17	Module
PV162	16.2*	CT16_1-17	Module
PV163	16.3*	CT16_1-17	Module
PV171	17.1*	CT14_1-17	Module
PV172	17.2*	CT14_5-17	Module
PV173	17.3*	CT14_5-17	Module
PV181	18.1*	CT15_1-17	Module
PV182	18.2*	CT63_3-17	Module
PV191	19.1	CT19_1-17	Module
PV192	19.2	CT19_2-17	Module
PV193	19.3	CT19_3-17	Module
PV194	19.4	CT19_4-17	Module
PV195	19.5	CT19_5-17	Module
PV196	19.6	CT19_6-17	Module
PV197	19.7	CT19_7-17	Module
PV200	20.0	CT20_0-17	Module
PV201	20.1*	CT20_0-17	Module
PV202	20.2*	CT20_0-17	Module
PV203	20.3*	CT20_0-17	Module
PV204	20.4*	CT20_0-17	Module
PV211	21.1	CT21_1-17	Module
PV212	21.2	CT21_2-17	Module
PV213	21.3	CT21_3-17	Module
PV214	21.4	CT21_4-17	Module
PV215	21.5	CT21_5-17	Module
PV220	22.0*	CT22_1-17	Module
PV221	22.1	CT22_1-17	Module
PV222	22.2	CT22_2-17	Module

NCCER Pipeline Operational Qualification (OQ) Crosswalk Performance Verification (PV)



If you used this PV...

For this task...

Use this product now.

Performance Verification	API Task Number <small>*obsolete tasks (refer to 3rd edition CT module)</small>	3rd Edition NCCER CT Modules	3rd Edition Product
PV231	23.1	CT23_1-17	Module
PV232	23.2	CT23_2-17	Module
PV241	24.1	CT24_1-17	Module
PV242	24.2	CT24_2-17	Module
PV251	25.1	CT25_1-17	Module
PV252	25.2	CT25_2-17	Module
PV260	26.0	CT26_0-17	Module
PV271	27.1	CT27_1-17	Module
PV272	27.2	N/A	Retired - No longer available for qualification as of September 2, 2017
PV273	27.3	N/A	Retired - No longer available for qualification as of September 2, 2017
PV280	28.0	CT28_0-17	Module
PV291	29.1	CT29_1-17	Module
PV292	29.2	CT29_2-17	Module
PV300	30.0	CT30_0-17	Module
PV310	31.0	CT31_0-17	Module
PV320	32.0	CT32_0-17	Module
PV331	33.1	CT33_1-17	Module
PV332	33.2	CT33_2-17	Module
PV333	33.3	CT33_3-17	Module
PV340	34.0	CT34_0-17	Module
PV350	35.0*	CT32_0-17	Module
PV361	36.1	CT36_1-17	Module
PV362	36.2	CT36_2-17	Module
PV363	36.3	CT36_3-17	Module
PV370	37.0	CT37_0-17	Module
PV381	38.1	CT38_1-17	Module
PV382	38.2	N/A	Retired - No longer available for qualification as of September 2, 2017
PV383	38.3	CT38_3-17	Module

NCCER Pipeline Operational Qualification (OQ) Crosswalk Performance Verification (PV)



If you used this PV...

For this task...

Use this product now.

Performance Verification	API Task Number <small>*obsolete tasks (refer to 3rd edition CT module)</small>	3rd Edition NCCER CT Modules	3rd Edition Product
PV384	38.4	N/A	Retired - No longer available for qualification as of September 2, 2017
PV385	38.5	N/A	Retired - No longer available for qualification as of September 2, 2017
PV386	38.6	N/A	Retired - No longer available for qualification as of September 2, 2017
PV387	38.7	N/A	Retired - No longer available for qualification as of September 2, 2017
PV390	39.0	CT39_0-17	Module
PV401	40.1	CT40_1-17	Module
PV402	40.2*	CT40_1-17	Module
PV403	40.3	CT40_3-17	Module
PV404	40.4	CT40_4-17	Module
PV405	40.5	CT40_5-17	Module
PV406	40.6	CT40_6-17	Module
PV407	40.7	CT40_7-17	Module
PV408	40.8	CT40_8-17	Module
PV409	40.9	CT40_9-17	Module
PV409_1	40.91*	CT40_6-17	Module
PV410	41.0	CT41_0-17	Module
PV421	42.1*	CT42_7-17	Module
PV422	42.2*	CT42_7-17	Module
PV423	42.3*	CT42_7-17	Module
PV424	42.4*	CT42_7-17	Module
PV425	42.5*	CT42_7-17	Module
PV426	42.6*	CT42_7-17	Module
PV427	42.7	CT42_7-17	Module

NCCER Pipeline Operational Qualification (OQ) Crosswalk Performance Verification (PV)



If you used this PV...

For this task...

Use this product now.

Performance Verification	API Task Number <small>*obsolete tasks (refer to 3rd edition CT module)</small>	3rd Edition NCCER CT Modules	3rd Edition Product
PV431	43.1*	CT64_1-17	Module
PV432	43.2*	CT64_2-17	Module
PV433	43.3*	CT64_3-17	Module
PV434	43.4*	CT64_4-17	Module
PV441	44.1*	CT44_3-17	Module
PV442	44.2*	CT44_3-17	Module
PV443	44.3	CT44_3-17	Module
PV444	44.4	CT44_4-17	Module
PV445	44.5	CT44_5-17	Module
PV446	44.6	CT44_6-17	Module
PV447	44.7	CT44_7-17	Module
PV448	44.8	CT44_8-17	Module
PV500	50.0	CT50_0-17	Module
PV510	51.0	CT51_0-17	Module
PV521	52.1	CT52_1-17	Module
PV522	52.2	CT52_2-17	Module
PV523	52.3	CT52_3-17	Module
PV540	54.0	CT54_0-17	Module
PV550	55.0	CT55_0-17	Module
PV560	56.0	CT56_0-17	Module
PV570	57.0	CT57_0-17	Module
PV580	58.0	CT58_0-17	Module
PV590	59.0	CT59_0-17	Module
PV631	63.1	CT63_1-17	Module
PV632	63.2	CT63_2-17	Module
PV633	63.3	CT63_3-17	Module
PV634	63.4	CT63_4-17	Module
PV641	64.1	CT64_1-17	Module
PV642	64.2	CT64_2-17	Module
PV643	64.3	CT64_3-17	Module
PV644	64.4	CT64_4-17	Module
PV651	65.1	CT65_1-17	Module
PV652	65.2	CT65_2-17	Module
PV653	65.3	CT65_3-17	Module
PV654	65.4	CT65_4-17	Module
PVCC	CC	CTCC-17	Module
PVFB	FB	CTFB-17	Module
PVMP	MP	CTMP-17	Module
PVTB	TB	CTTB-17	Module
PVTP	TP	CTTP-17	Module