	Title:	<b>Heavy Equipment Operator, Level 1</b>
	Edition:	<b>3</b>
	Publication Date:	<b>2012, updated in 2020</b>
	Additional Instructor Requirement(s):	<b>None</b>
	Prerequisite(s):	<b>Core</b>
Previous Edition Expiration Date:	<b>www.nccer.org/expirations</b>	



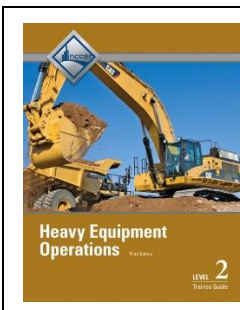
Book Module Number	Module Name	2 <sup>nd</sup> Edition Mod ID #	3 <sup>rd</sup> Edition Mod ID #	3 <sup>rd</sup> Edition Hours	2 <sup>nd</sup> Edition Hours	Equivalent Registry Module(s)	Performance Profile	Comments	
---	---	---	---	<b>77.5</b>	72.5	---	---	• Core, 6 <sup>th</sup> edition	
1	<b>Orientation to the Trade</b>	22101-12	22101	<b>5</b>	5	22101-12	No		
2	<b>Heavy Equipment Safety</b>	22102-12	22102	<b>15</b>	10	22102-12	Yes		
3	<b>Identification of Heavy Equipment</b>	22103-12	22103	<b>5</b>	5	22103-12	Yes		
4	<b>Basic Operational Techniques</b>	22104-12	22104	<b>27.5</b>	27.5	22104-12	Yes		
5	<b>Utility Tractors</b>	22105-12	22105	<b>17.5</b>	17.5	22105-12	Yes		
6	<b>Introduction to Earthmoving</b>	22201-12	22201	<b>12.5</b>	12.5	22201-12	Yes		
7	<b>Grades</b>	22106-12	22106	<b>15</b>	15	22106-12	Yes		
8	<b>Vertical-Mast Sit-Down Counterbalance Forklifts</b>	---	22107	<b>6</b>	---	---	Yes	<ul style="list-style-type: none"> <li>• NEW MODULE</li> <li>• <b>ELECTIVE</b></li> <li>• Not required for Level completion. Conventional Fixed-Mast Forklifts</li> </ul>	
				<b>Total Elective Hours</b>	159	165			
				<b>Total Required Hours</b>	166				

**Definitions:**

- Lock-Down Module:** A module adopted “as-is” from another craft or an earlier edition of the same curriculum.
- Equivalent Module:** A module whose learning and performance outcomes match those of the newer editions and is therefore considered ‘equivalent’ in NCCER’s Registry.
- Interim Credential:** A module, or group of modules, whose learning and performance outcomes demonstrates competence of specific components in an occupational area and results in a unique credential in the Registry.

**Color Highlight Legend:**

- = No Performance Test
- = Lock-Down Module
- = Equivalent Module
- = Deleted



Title:	<b>Heavy Equipment Operator, Level 2</b>
Edition:	<b>3</b>
Publication Date:	<b>2013, reissued in 2020</b>
Additional Instructor Requirement(s):	<b>None</b>
Prerequisite(s):	<b>None</b>
Previous Edition Expiration Date:	<b>www.nccer.org/expirations</b>



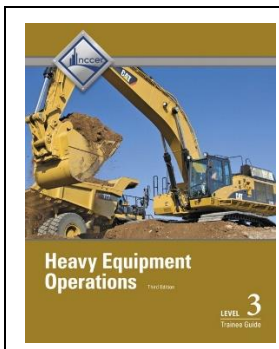
Book Module Number	Module Name	2 <sup>nd</sup> Edition Mod ID #	3 <sup>rd</sup> Edition Mod ID #	3 <sup>rd</sup> Edition Hours	2 <sup>nd</sup> Edition Hours	Equivalent Registry Module(s)	Performance Profile	Comments
1	<b>Rough Terrain Forklifts</b>	22206-13	<b>22206</b>	<b>22.5</b>	22.5	22206-13	Yes	
2	<b>On-Road Dump Trucks</b>	22202-13	<b>22202</b>	<b>20</b>	20	22202-13	Yes	
3	<b>Excavation Math</b>	22207-13	<b>22207</b>	<b>17.5</b>	17.5	22207-13	Yes	
4	<b>Interpreting Civil Drawings</b>	22209-13	<b>22209</b>	<b>20</b>	20	22209-13	Yes	
5	<b>Site Work</b>	22210-13	<b>22210</b>	<b>20</b>	20	22210-13	Yes	
6	<b>Soils</b>	22308-13	<b>22308</b>	<b>10</b>	10	22308-13	Yes	
7	<b>Skid Steers</b>	22212-13	<b>22212</b>	<b>22.5</b>	22.5	22212-13	Yes	
8	<b>Loaders</b>	22205-13	<b>22205</b>	<b>17.5</b>	17.5	22205-13	Yes	
9	<b>Scrapers</b>	22204-13	<b>22204</b>	<b>17.5</b>	17.5	22204-13	Yes	
				<b>Total Hours</b>	167.5			

**Definitions:**

- Lock-Down Module:** A module adopted “as-is” from another craft or an earlier edition of the same curriculum.
- Equivalent Module:** A module whose learning and performance outcomes match those of the newer editions and is therefore considered ‘equivalent’ in NCCER’s Registry.
- Interim Credential:** A module, or group of modules, whose learning and performance outcomes demonstrates competence of specific components in an occupational area and results in a unique credential in the Registry.

**Color Highlight Legend:**

- = No Performance Test
- = Lock-Down Module
- = Equivalent Module
- = Deleted



Title:	<b>Heavy Equipment Operator, Level 3</b>
Edition:	<b>3</b>
Publication Date:	<b>2014, reissued in 2020</b>
Additional Instructor Requirement(s):	<b>None</b>
Prerequisite(s):	<b>None</b>
Previous Edition Expiration Date:	<b>www.nccer.org/expirations</b>



Book Module Number	Module Name	2 <sup>nd</sup> Edition Mod ID #	3 <sup>rd</sup> Edition Mod ID #	3 <sup>rd</sup> Edition Hours	2 <sup>nd</sup> Edition Hours	Equivalent Registry Module(s)	Performance Profile	Comments
1	<b>Finishing and Grading</b>	22307-14	<b>22307</b>	<b>25</b>	25	22307-14	Yes	
2	<b>Compaction Equipment</b>	22203-14	<b>22203</b>	<b>25</b>	25	22203-14	Yes	
3	<b>Backhoes</b>	22303-14	<b>22303</b>	<b>30</b>	30	22303-14	Yes	
4	<b>Off-Road Dump Trucks</b>	22310-14	<b>22310</b>	<b>30</b>	30	22310-14	Yes	
5	<b>Dozers</b>	22302-14	<b>22302</b>	<b>30</b>	30	22302-14	Yes	
6	<b>Excavators</b>	22304-14	<b>22304</b>	<b>35</b>	35	22304-14	Yes	
7	<b>Motor Graders</b>	22305-14	<b>22305</b>	<b>40</b>	40	22305-14	Yes	
				<b>Total Hours</b>	<b>215</b>	215		

**Definitions:**

- Lock-Down Module:** A module adopted “as-is” from another craft or an earlier edition of the same curriculum.
- Equivalent Module:** A module whose learning and performance outcomes match those of the newer editions and is therefore considered ‘equivalent’ in NCCER’s Registry.
- Interim Credential:** A module, or group of modules, whose learning and performance outcomes demonstrates competence of specific components in an occupational area and results in a unique credential in the Registry.

**Color Highlight Legend:**

- = No Performance Test
- = Lock-Down Module
- = Equivalent Module
- = Deleted